

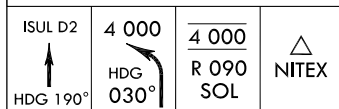
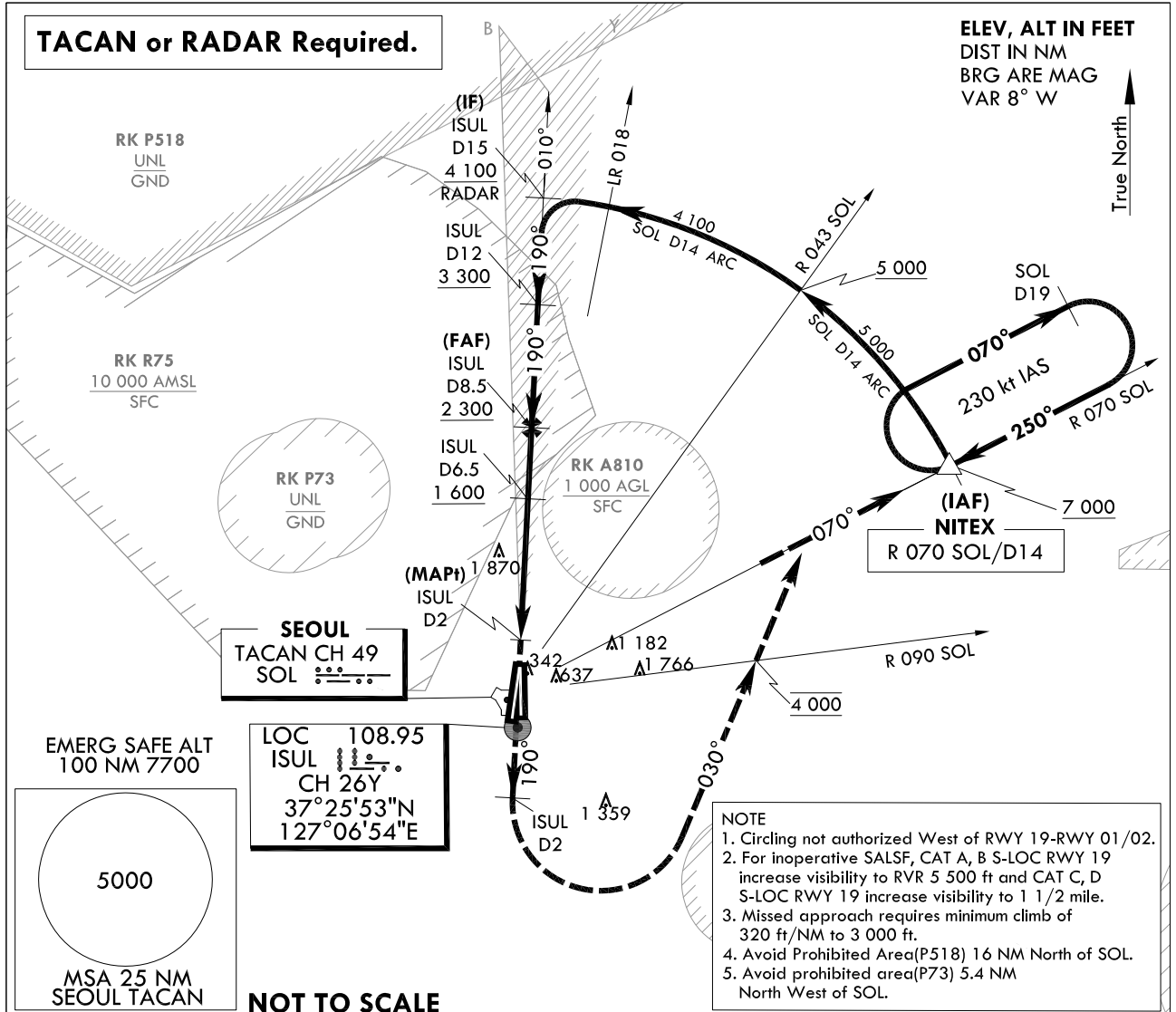
**INSTRUMENT
APPROACH
CHART**

AERODROME ELEV 93 ft
HEIGHTS RELATED TO
THR RWY 19 - ELEV 68 ft

SEOUL APP 123.8 363.8
SEOUL TWR 126.2
234.5 236.6

SEOUL/Seoul(RKSM)
LOC/DME Z
RWY 19

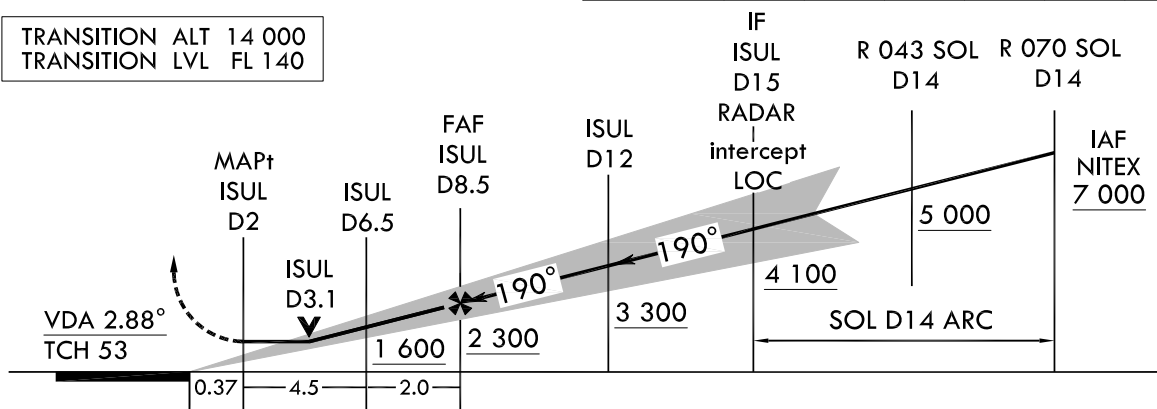
Note : Approach and Circle to land under U.S. TERPS.



Missed Approach Climb Rate table

Knots	60	120	180	240	300	TO
V/V(fpm)	320	640	960	1 280	1 590	3 000

TRANSITION ALT 14 000
TRANSITION LVL FL 140



CATEGORY	A	B	C	D	E
S-LOC RWY 19	600 / 40 528 (600 - 3/4)		600 - 1 1/4 528 (600 - 1 1/4)		N/A
Circling	1 020 - 1 1/4 927 (1 000 - 1 1/4)		1 560 - 3 1 467 (1 500 - 3)	2 260 - 3 2 167 (2 200 - 3)	N/A

MISSED APPROACH

Climb HDG 190° to ISUL 2 DME and climbing left turn HDG 030° to cross R 090 SOL at 4 000 ft, then R 070 SOL to NITEX and hold, continue climb-in-holding to 7 000 ft.

Change : Information of RK P73 and RK R75.

INTENTIONALLY

LEFT

BLANK

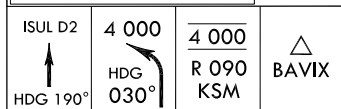
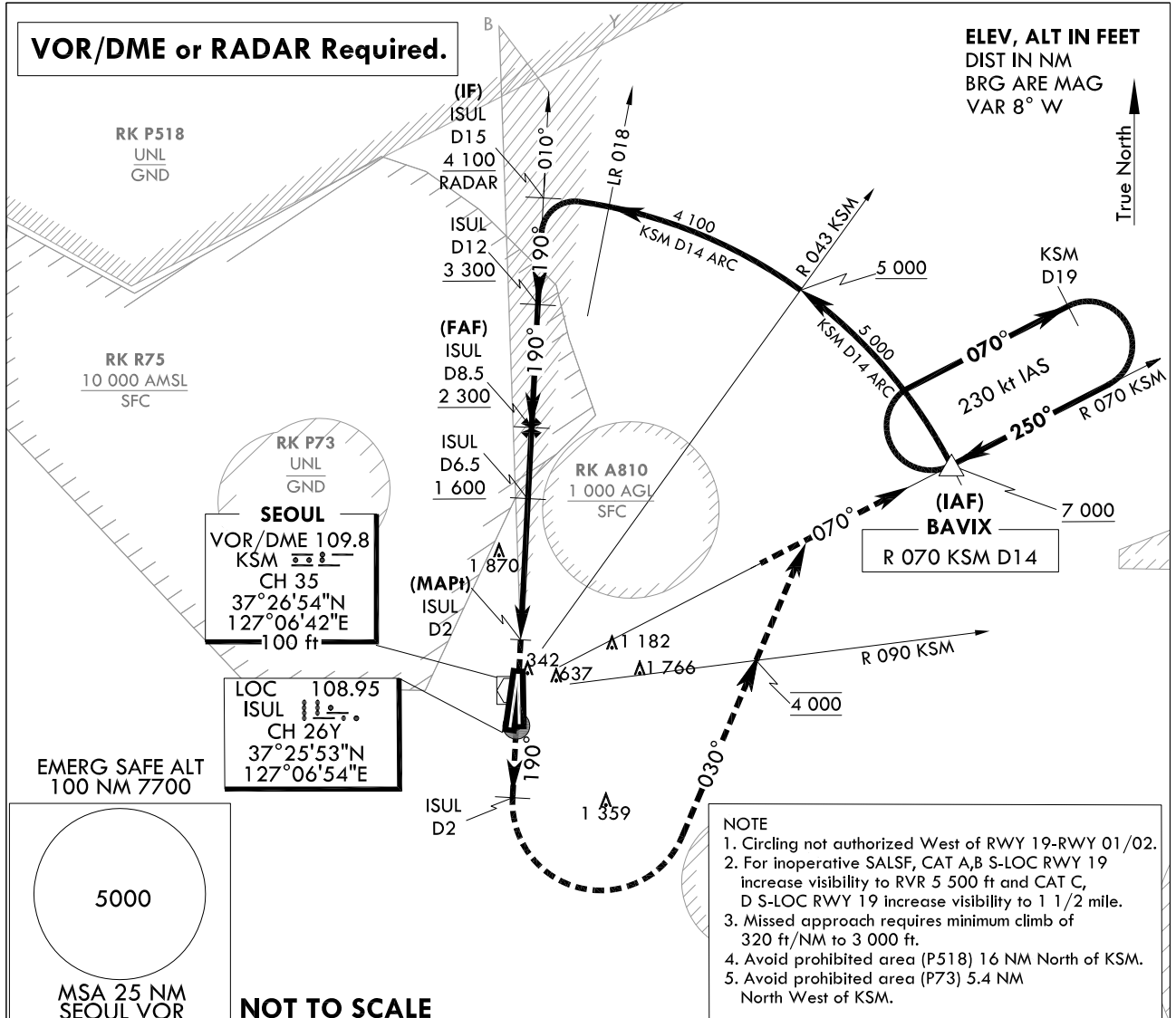
**INSTRUMENT
APPROACH
CHART**

AERODROME ELEV 93 ft
HEIGHTS RELATED TO
THR RWY 19 - ELEV **68 ft**

SEOUL APP 123.8 363.8
SEOUL TWR 126.2
234.5 236.6

SEOUL/Seoul(RKSM)
LOC/DME Y
RWY 19

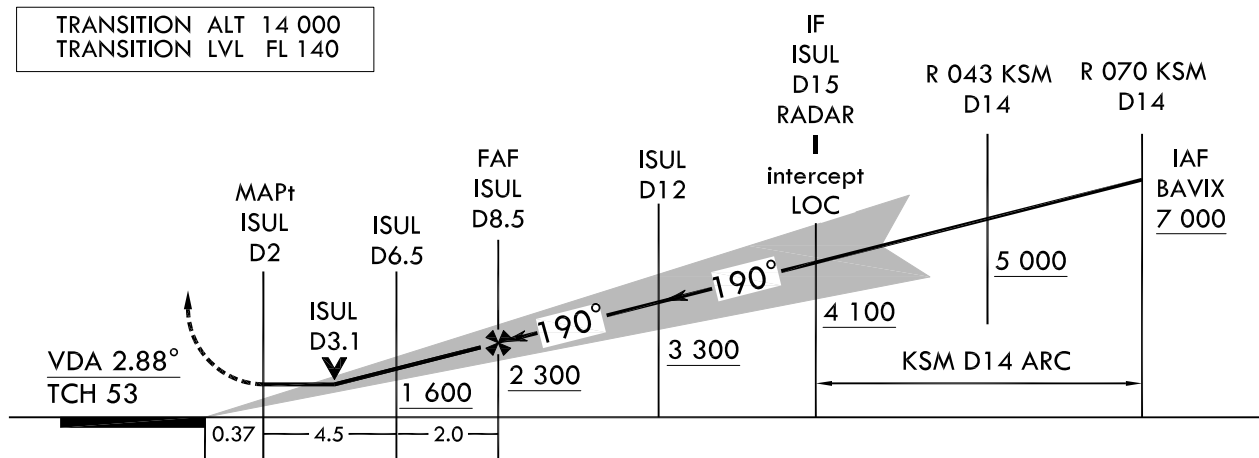
Note : Approach and Circle to land under U.S. TERPS.



Missed Approach Climb Rate table

Knots	60	120	180	240	300	TO
V/V(fpm)	320	640	960	1 280	1 590	3 000

TRANSITION ALT 14 000
TRANSITION LVL FL 140



CATEGORY	A	B	C	D	E
S-LOC RWY 19	600 / 40 528 (600 - 3/4)		600 - 1/4	528 (600 - 1/4)	N/A
Circling	1 020 - 1 1/4 927(1 000-1 1/4)		1 560 - 3 1 467(1 500-3)	2 260 - 3 2 167(2 200-3)	N/A

MISSED APPROACH

Climb HDG 190° to ISUL 2 DME and climbing left turn HDG 030° to cross R 090 KSM at 4 000 ft, then R 070 KSM to BAVIX and hold, continue climb-in-holding to 7 000 ft.

Change : Information of RK P73 and RK R75.

INTENTIONALLY

LEFT

BLANK

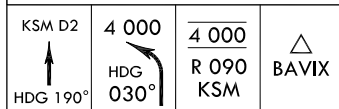
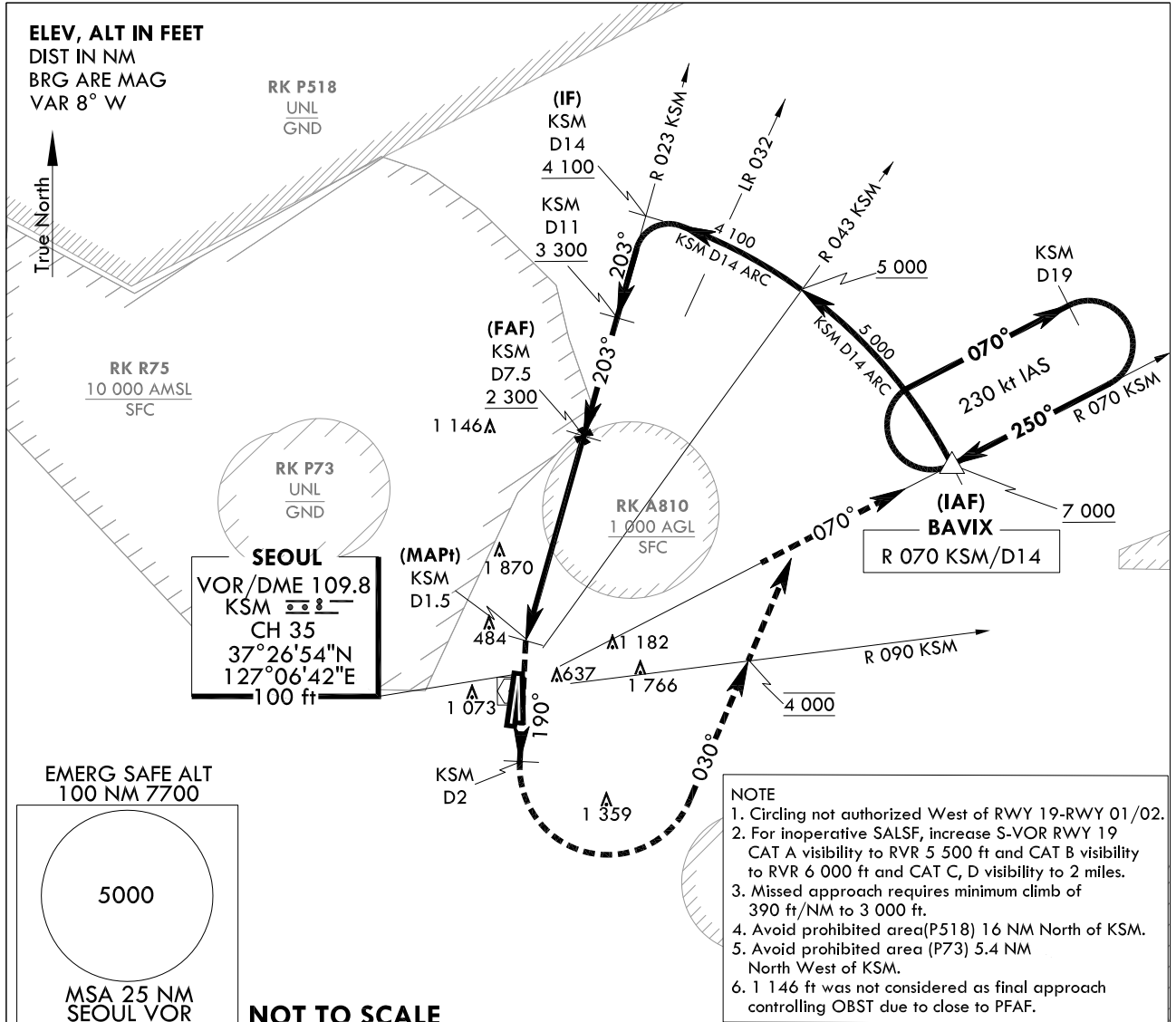
**INSTRUMENT
APPROACH
CHART**

AERODROME ELEV 93 ft
HEIGHTS RELATED TO
THR RWY 19 - ELEV 68 ft

SEOUL APP 123.8 363.8
SEOUL TWR 126.2
234.5 236.6

SEOUL/Seoul(RKSM)
VOR/DME
RWY 19

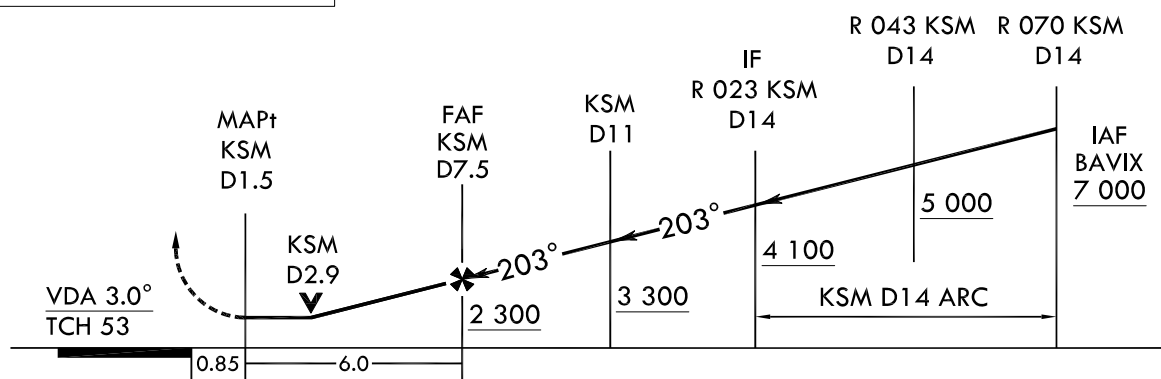
Note : Approach and Circle to land under U.S. TERPS.



Missed Approach Climb Rate table

Knots	60	120	180	240	300	TO
V/V(fpm)	390	770	1 150	1 530	1 910	3 000

TRANSITION ALT 14 000
TRANSITION LVL FL 140



CATEGORY	A	B	C	D	E
S-VOR RWY 19	820 / 40 748 (800 - 3/4)	820 / 55 748 (800 - 1)	820 - 1 7/8 748 (800 - 1 7/8)		N/A
Circling	1 020 - 1 1/4 927(1 000-1 1/4)		1 560 - 3 1 467(1 500-3)	2 260 - 3 2 167(2 200-3)	N/A

MISSED APPROACH

Climb HDG 190° to KSM 2 DME and climbing left turn HDG 030° to cross R 090 KSM at 4 000 ft, then R 070 KSM to BAVIX and hold, continue climb-in-holding to 7 000 ft.

Change : Information of RK P73 and RK R75.

INTENTIONALLY

LEFT

BLANK

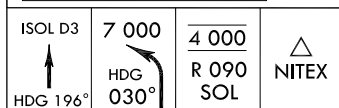
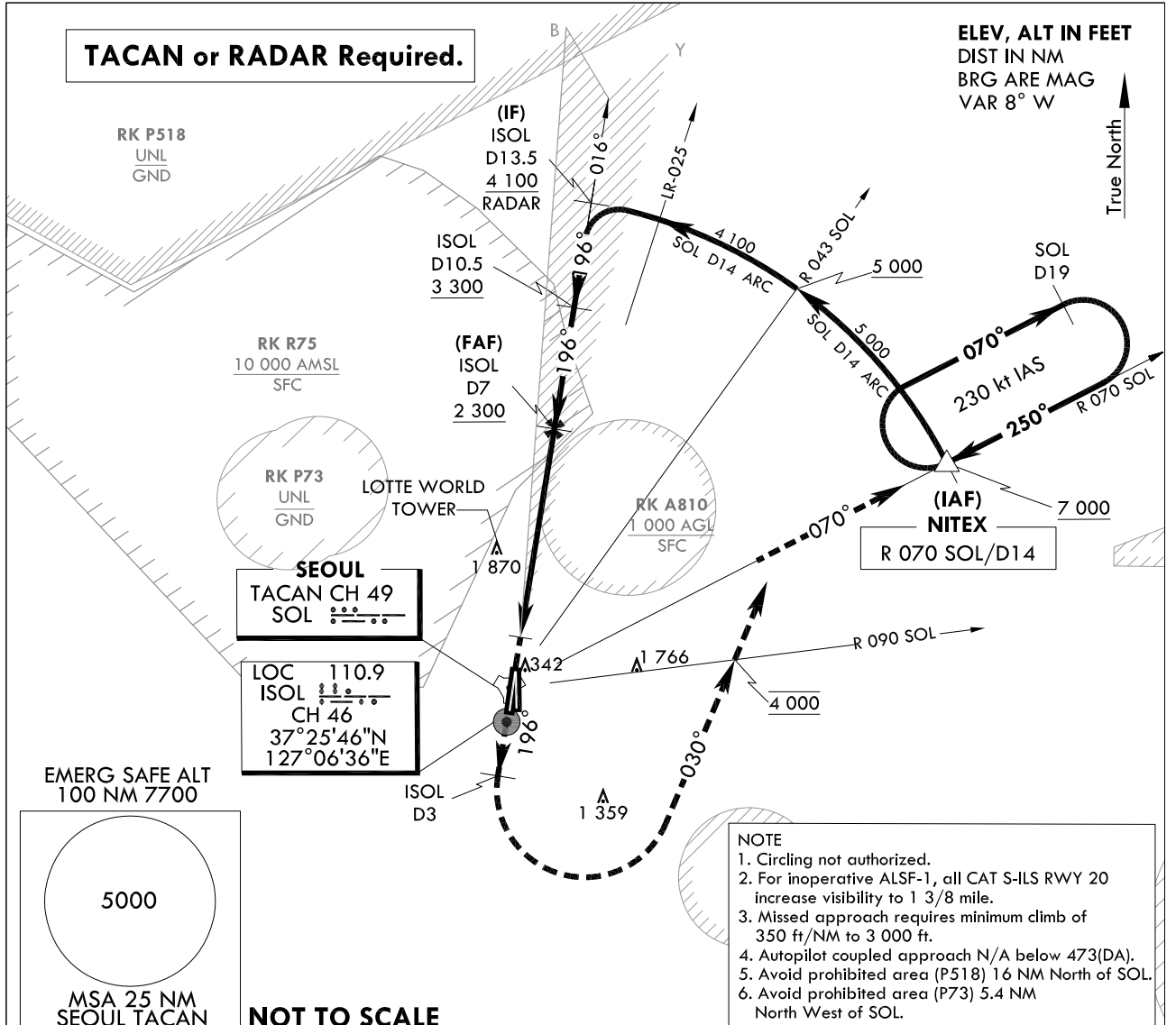
**INSTRUMENT
APPROACH
CHART**

AERODROME ELEV 93 ft
HEIGHTS RELATED TO
THR RWY 20 - ELEV 68 ft
HIGHEST ELEV TDZ 69 ft

SEOUL APP 123.8 363.8
SEOUL TWR 126.2
234.5 236.6

SEOUL/Seoul(RKSM)
ILS Z
RWY 20

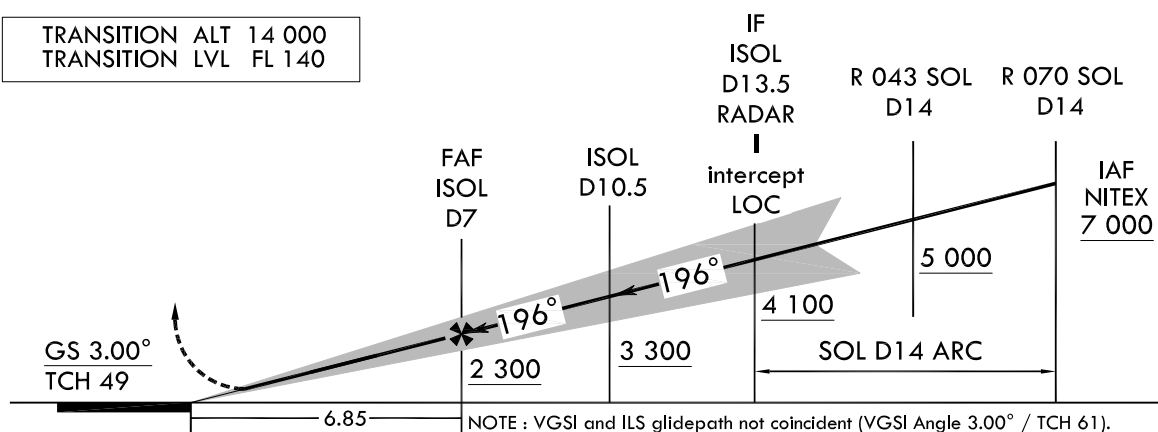
Note : Approach and Circle to land under U.S. TERPS.



Missed Approach Climb Rate table

Knots	60	120	180	240	300	TO
V/V(fpm)	350	700	1 050	1 400	1 750	3 000

TRANSITION ALT 14 000
TRANSITION LVL FL 140



MISSED APPROACH

Climb HDG 196° to ISOL 3 DME and climbing left turn HDG 030° to cross R 090 SOL at 4 000 ft, then R 070 SOL to NITEX and hold, continue climb-in-holding to 7 000 ft.

CATEGORY	A	B	C	D	E
S-ILS RWY 20		473 / 45	404 (400 - $\frac{7}{8}$)		N/A

Change : Information of RK P73 and RK R75.

INTENTIONALLY

LEFT

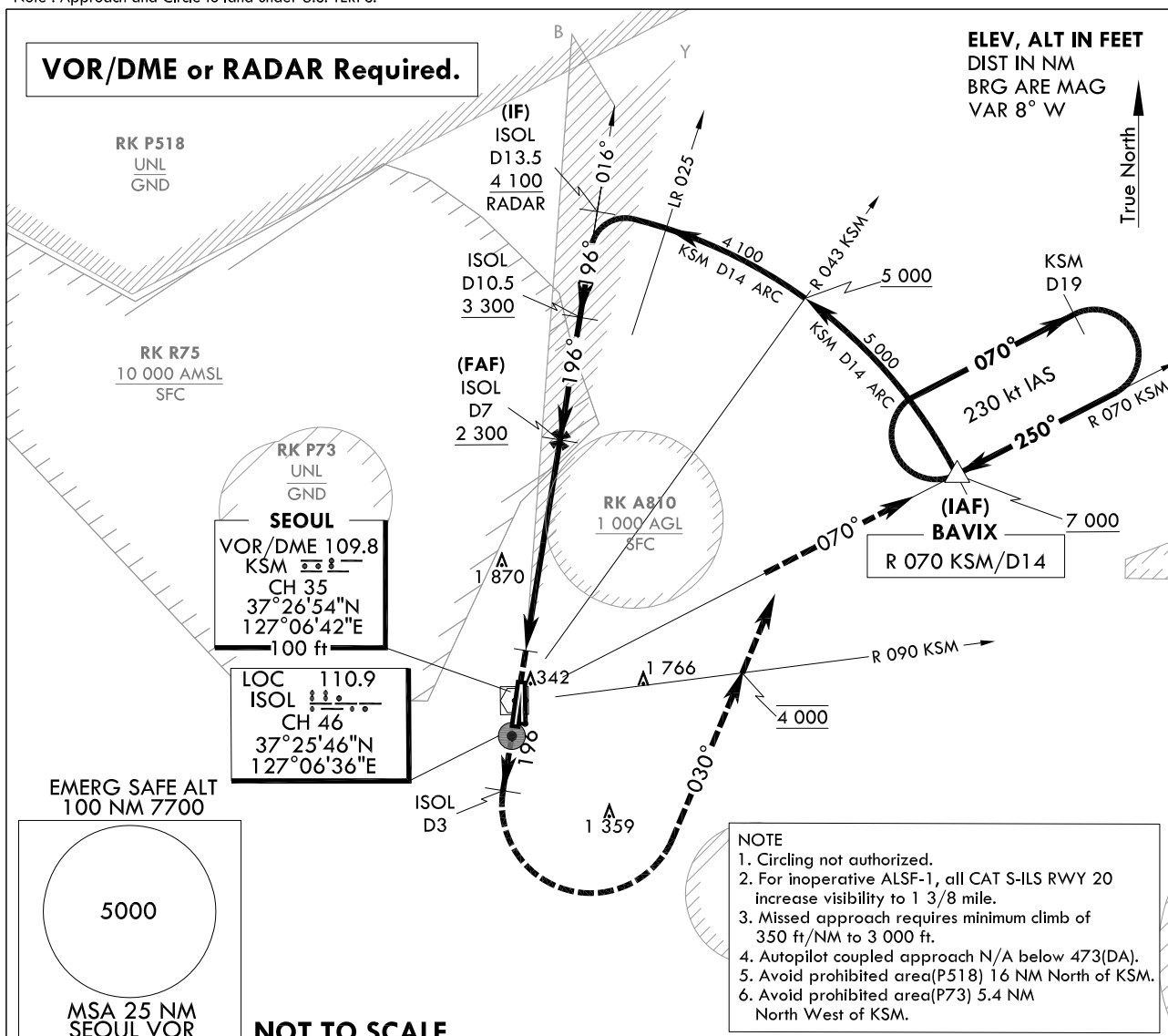
BLANK

AERODROME ELEV 93 ft
 HEIGHTS RELATED TO
 THR RWY 20 - ELEV **68 ft**
 HIGHEST ELEV TDZ 69 ft

SEOUL APP	123.8	363.8
SEOUL TWR	126.2	
	234.5	236.6

SEOUL/Seoul(RKSM)
ILS Y
RWY 20

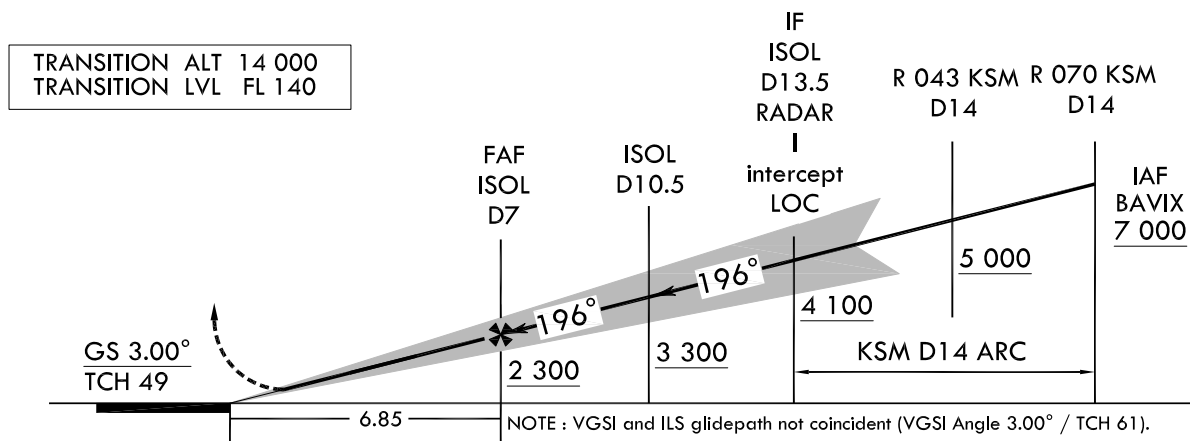
Note : Approach and Circle to land under U.S. TERPS.



ISOL D3 ↑ HDG 196°	4 000 HDG 030°	4 000 R 090 KSM	△ BAVIX
--------------------------	----------------------	-----------------------	------------

Missed Approach Climb Rate table

Knots	60	120	180	240	300	TO
V/V(fpm)	350	700	1 050	1 400	1 750	3 000



CATEGORY	A	B	C	D	E
S-ILS RWY 20	473 / 45 404 (400 - $\frac{7}{8}$)				N/A

MISSED APPROACH
Climb HDG 196° to ISOL 3 DME and
climbing left turn HDG 030°
to cross R 090 KSM at 4 000 ft,
then R 070 KSM to BAVIX and hold,
continue climb-in-holding to 7 000 ft.

INTENTIONALLY

LEFT

BLANK

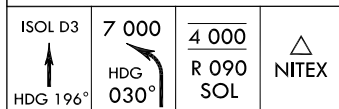
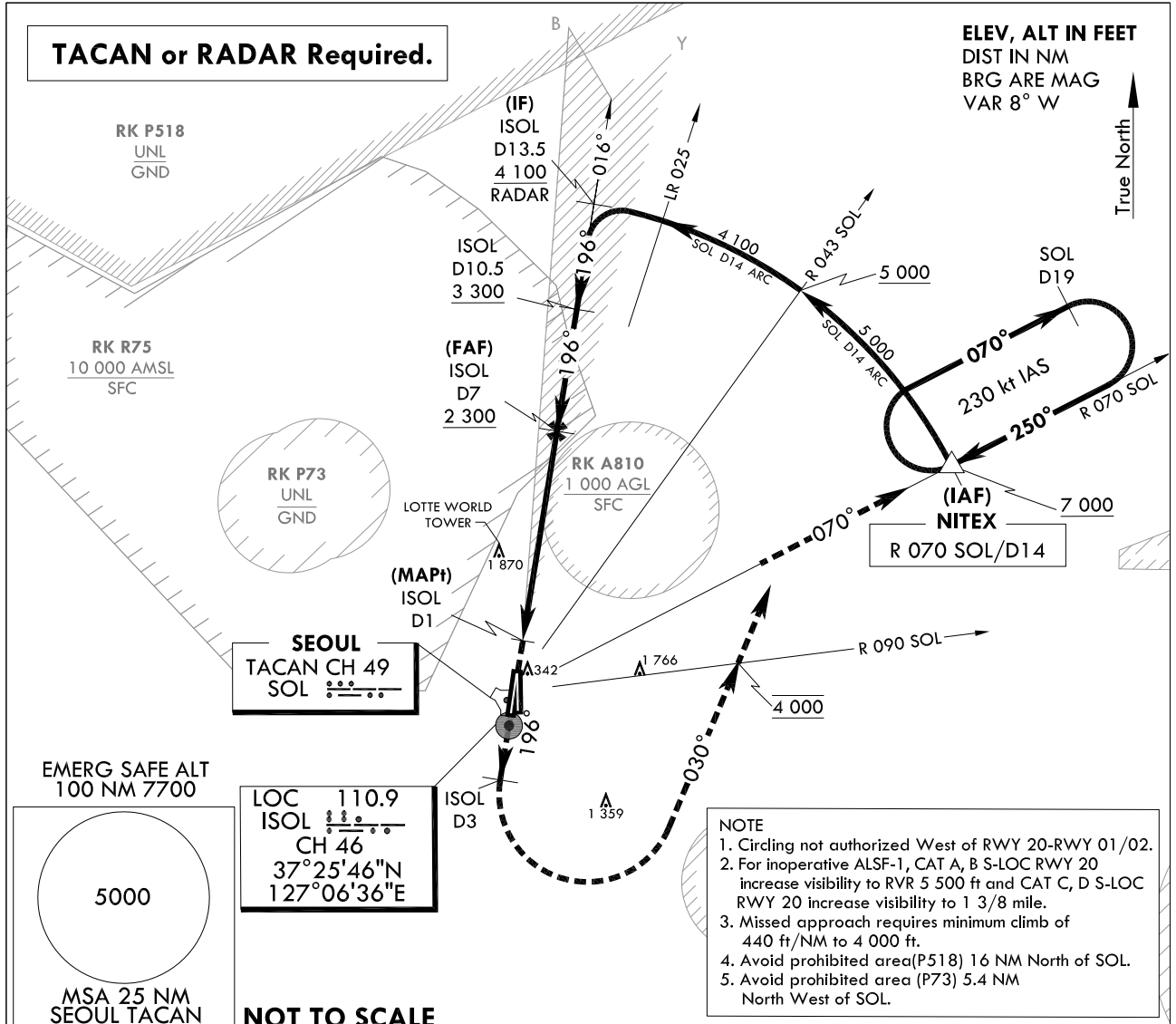
**INSTRUMENT
APPROACH
CHART**

AERODROME ELEV 93 ft
HEIGHTS RELATED TO
THR RWY 20 - ELEV 68 ft
HIGHEST ELEV TDZ 69 ft

SEOUL APP 123.8 363.8
SEOUL TWR 126.2
234.5 236.6

SEOUL/Seoul(RKSM)
LOC/DME Z
RWY 20

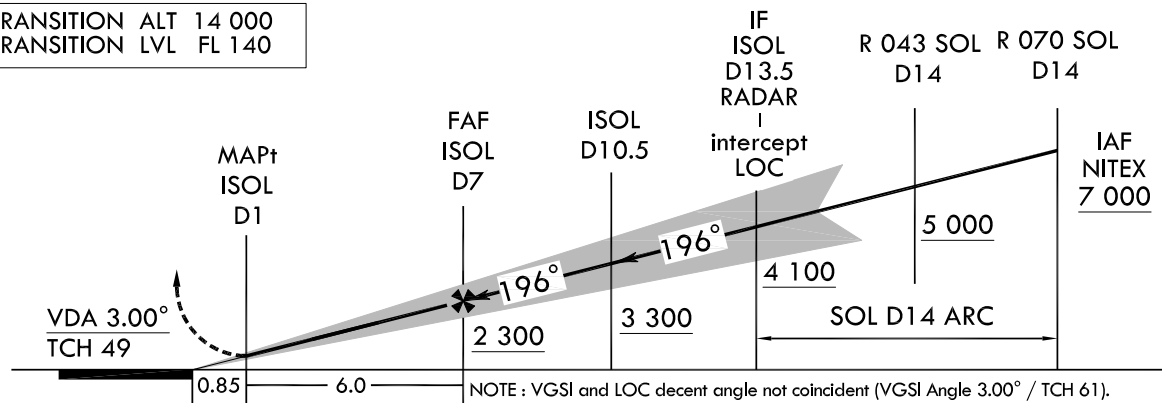
Note : Approach and Circle to land under U.S. TERPS.



Missed Approach Climb Rate table

Knots	60	120	180	240	300	TO
V/V(fpm)	440	880	1 320	1 760	2 200	4 000

TRANSITION ALT 14 000
TRANSITION LVL FL 140



CATEGORY	A	B	C	D	E
S-LOC RWY 20	520 / 35 451 (500 - $\frac{5}{8}$)		520 - 45 451 (500 - $\frac{7}{8}$)		N/A
Circling	1 020 - 1 $\frac{1}{4}$ 927(1 000-1 $\frac{1}{4}$)		1 560 - 3 1 467(1 500-3)	2 260 - 3 2 167(2 200-3)	N/A

MISSED APPROACH

Climb HDG 196° to ISOL 3 DME and climbing left turn HDG 030° to cross R 090 SOL at 4 000 ft, then R 070 SOL to NITEX and hold, continue climb-in-holding to 7 000 ft.

Change : Information of RK P73 and RK R75.

INTENTIONALLY

LEFT

BLANK

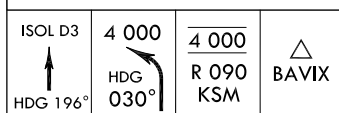
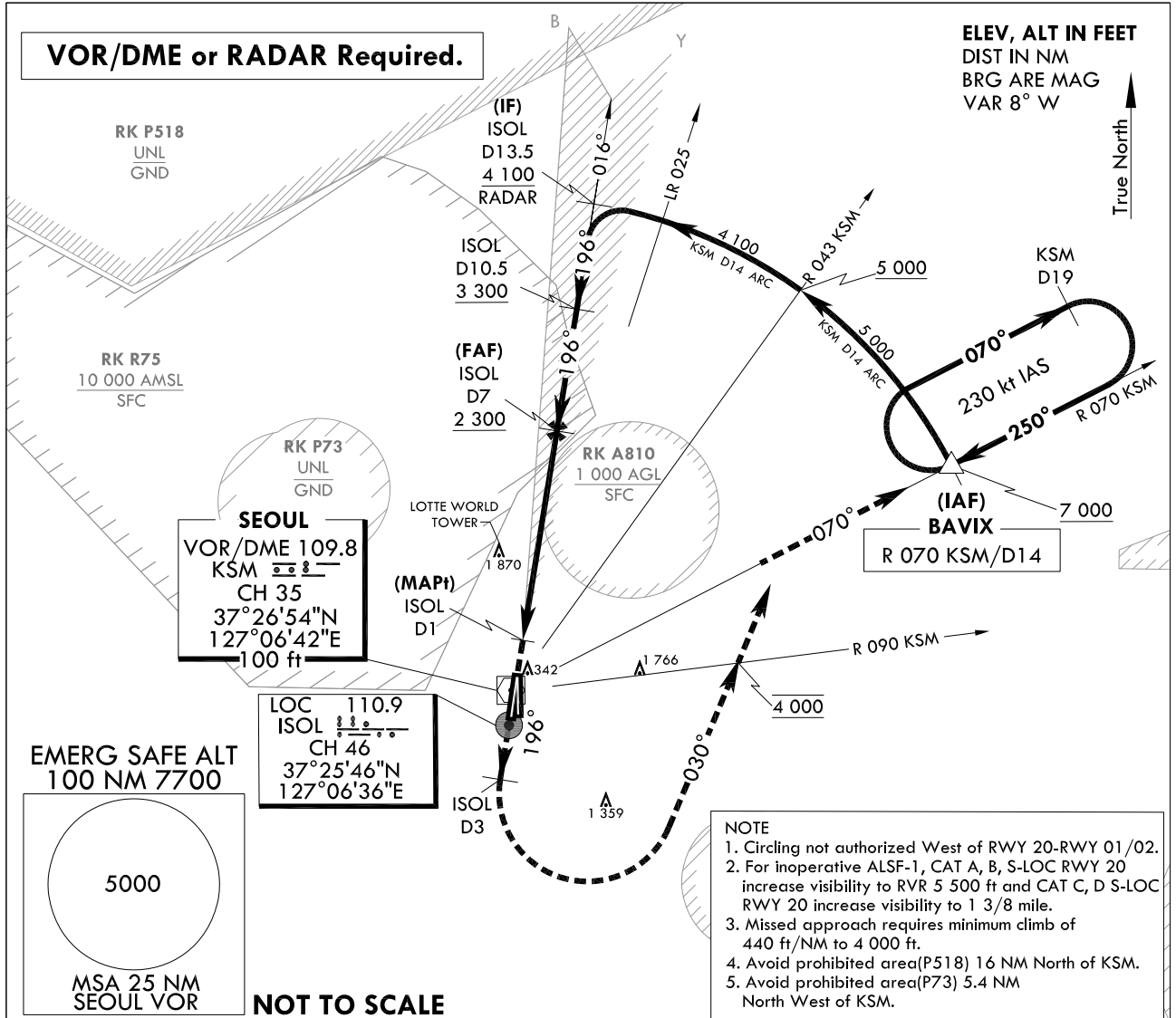
**INSTRUMENT
APPROACH
CHART**

AERODROME ELEV 93 ft
HEIGHTS RELATED TO
THR RWY 20 - ELEV 68 ft
HIGHEST ELEV TDZ 69 ft

SEOUL APP 123.8 363.8
SEOUL TWR 126.2
234.5 236.6

SEOUL/Seoul(RKSM)
LOC/DME Y
RWY 20

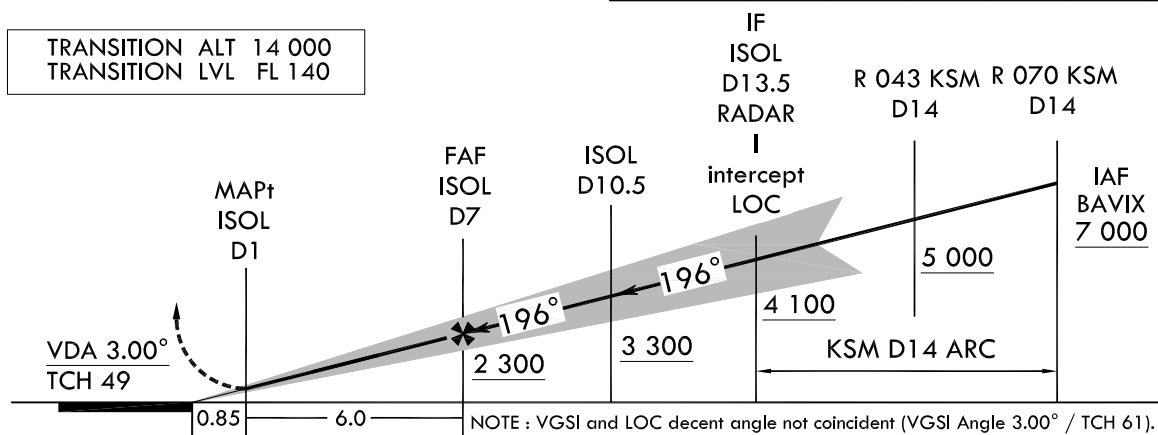
Note : Approach and Circle to land under U.S. TERPS.



Missed Approach Climb Rate table

Knots	60	120	180	240	300	TO
V/V(fpm)	440	880	1 320	1 760	2 200	4 000

TRANSITION ALT 14 000
TRANSITION LVL FL 140



CATEGORY	A	B	C	D	E
S-LOC RWY 20	520 / 35 451 (500 - 8)		520 - 45 451 (500 - 8)		N/A
Circling	1 020 - 1 1/4 927 (1 000 - 1 1/4)		1 560 - 3 1 467 (1 500 - 3)	2 260 - 3 2 167 (2 200 - 3)	N/A

MISSED APPROACH

Climb HDG 196° to ISOL 3 DME and climbing left turn HDG 030° to cross R 090 KSM at 4 000 ft, then R 070 KSM to BAVIX and hold, continue climb-in-holding to 7 000 ft.

Change : Information of RK P73 and RK R75.

INTENTIONALLY

LEFT

BLANK

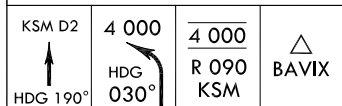
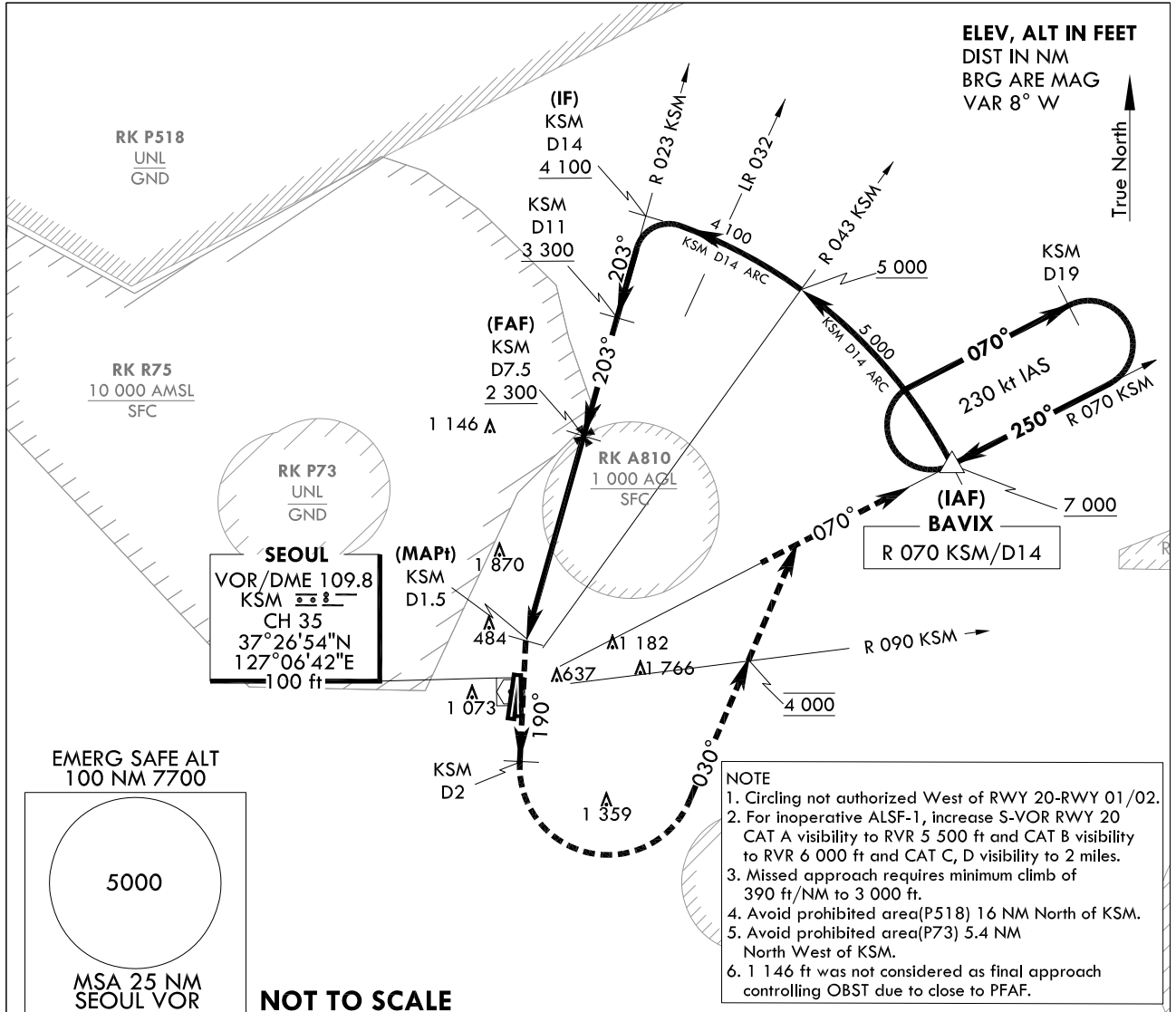
**INSTRUMENT
APPROACH
CHART**

AERODROME ELEV 93 ft
HEIGHTS RELATED TO
THR RWY 20 - ELEV **68 ft**
HIGHEST ELEV TDZ 69 ft

SEOUL APP 123.8 363.8
SEOUL TWR 126.2
234.5 236.6

SEOUL/Seoul(RKSM)
VOR/DME
RWY 20

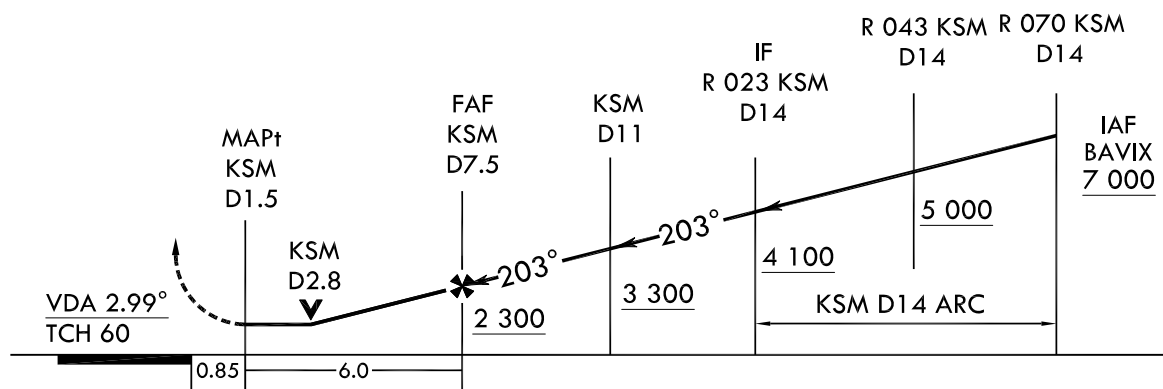
Note : Approach and Circle to land under U.S. TERPS.



Missed Approach Climb Rate table

Knots	60	120	180	240	300	TO
V/V(fpm)	390	770	1 150	1 530	1 910	3 000

TRANSITION ALT 14 000
TRANSITION LVL FL 140



CATEGORY	A	B	C	D	E
S-VOR RWY 20	820 / 35 751 (800 - $\frac{5}{8}$)	820 / 40 751 (800 - $\frac{3}{4}$)	820 - $1\frac{3}{4}$ 751 (800 - $1\frac{3}{4}$)		N/A
Circling	1 020 - $1\frac{1}{4}$ 927(1 000 - $1\frac{1}{4}$)		1 560 - 3 1 467(1 500-3)	2 260 - 3 2 167(2 200-3)	N/A

Change : Information of RK P73 and RK R75.

INTENTIONALLY

LEFT

BLANK

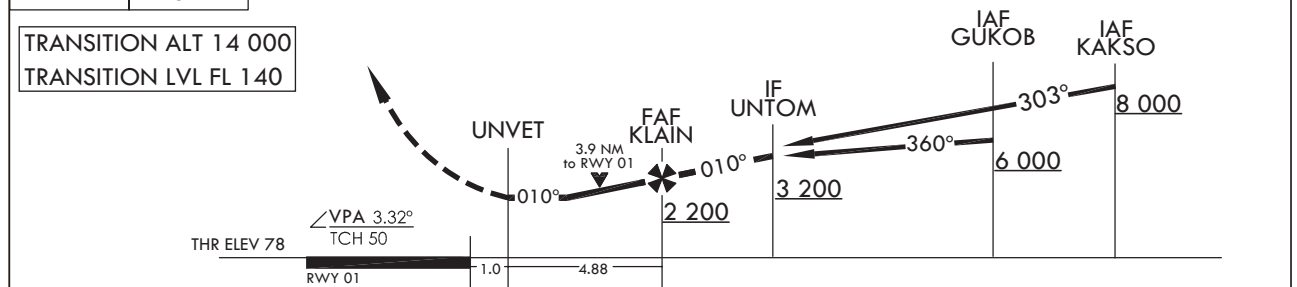
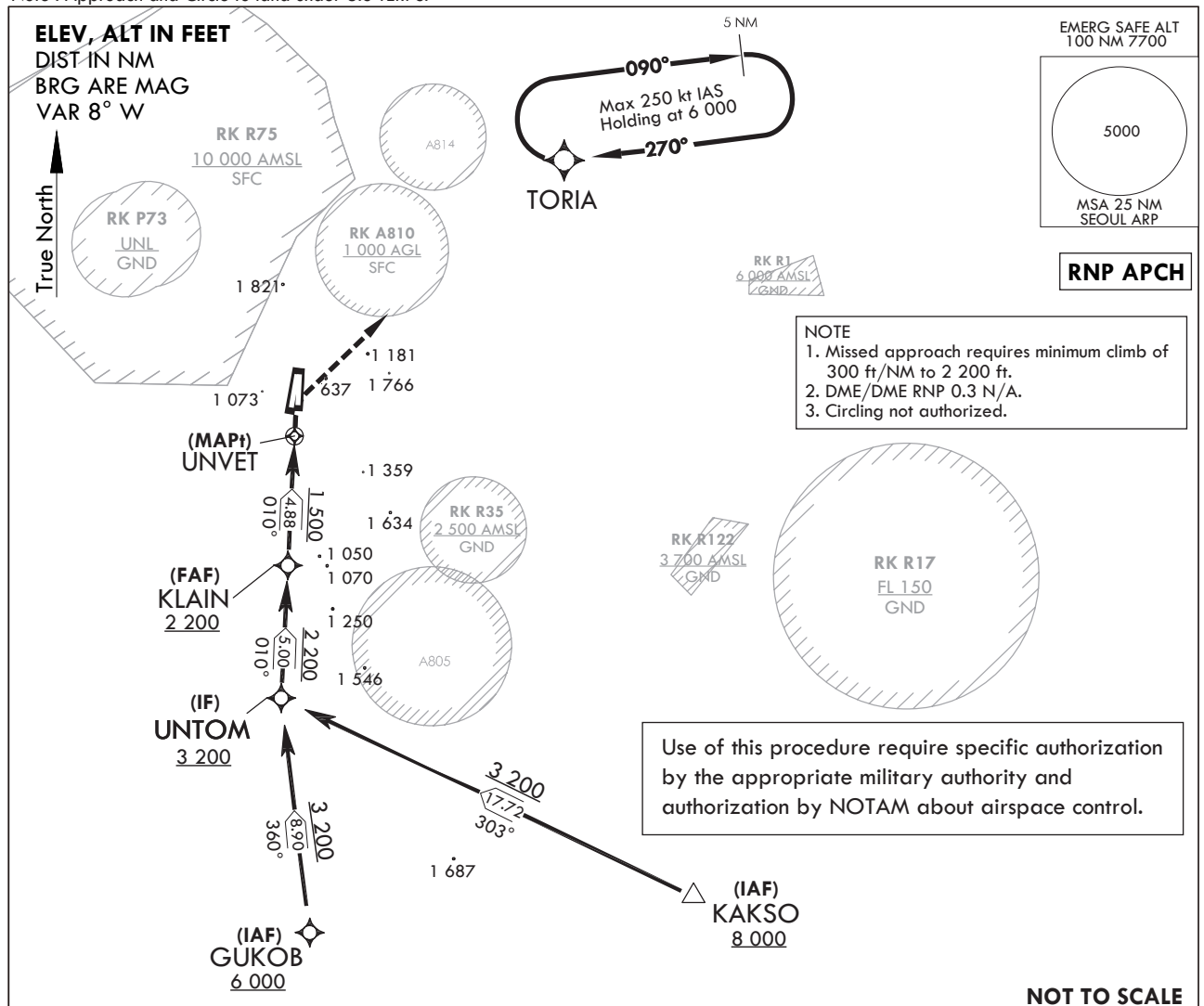
**INSTRUMENT
APPROACH
CHART**

AERODROME ELEV **94** ft
HEIGHTS RELATED TO
THR RWY 01 - ELEV **78** ft

SEOUL APP 123.8 363.8
SEOUL TWR 126.2
236.6 234.5

**SEOUL/Seoul(RKSM)
RNP RWY 01**

Note : Approach and Circle to land under U.S TERPS.



CATEGORY	A	B	C	D	E
LNAV/ VNAV DA	N/A				
LNAV	1 500-1¼ 1 422(1 500-1¼)	1 500-1½ 1 422(1 500-1½)	1 500-3 1 422(1 500-3)		N/A
CIRCLING	N/A				

Change : Information of RK P73 and RK R75.

AERONAUTICAL DATA TABULATION

Instrument Approach Procedure Coding Tables

RNP RWY 01 (From GUKOB)

Serial Number	Path Descriptor	Waypoint Identifier	Fly -Over	Course/Track ° M(° T)	Distance (NM)	Turn Direction	Altitude (ft)	Speed (kt)	Coordinates	VPA /TCH	Navigation specification	Remarks
001	IF	GUKOB	-	-	-	-	+6 000	-	37°06'20.2845"N 127°08'01.9225"E	-	RNP APCH	IAF
002	TF	UNTOM	-	359.9/351.9	8.9	-	+3 200	-	37°15'09.3930"N 127°06'28.1856"E	-	RNP APCH	IF
003	TF	KLAIN	-	9.8/1.8	5	-	+2 200	-	37°20'09.6309"N 127°06'39.9962"E	-	RNP APCH	FAF
004	TF	UNVET	Y	9.8/1.8	4.88	-	+1 500	-	37°25'02.5948"N 127°06'51.5321"E	3.32°/50	RNP APCH	MAPt
005	DF	TORIA	-	-	-	R	6 000	-	37°38'02.3748"N 127°21'30.6133"E	-	RNP APCH	-
006	HM	TORIA	-	270.0/262.0	5	R	@6 000	-250	37°38'02.3748"N 127°21'30.6133"E	-	RNP APCH	HOLDING 5 NM LEG

RNP RWY 01 (From KAKSO)

Serial Number	Path Descriptor	Waypoint Identifier	Fly -Over	Course/Track ° M(° T)	Distance (NM)	Turn Direction	Altitude (ft)	Speed (kt)	Coordinates	VPA /TCH	Navigation specification	Remarks
001	IF	KAKSO	-	-	-	-	+8 000	-	37°07'45"N 127°26'37"E	-	RNP APCH	IAF
002	TF	UNTOM	-	302.8/294.8	17.72	-	+3 200	-	37°15'09.3930"N 127°06'28.1856"E	-	RNP APCH	IF
003	TF	KLAIN	-	9.8/1.8	5	-	+2 200	-	37°20'09.6309"N 127°06'39.9962"E	-	RNP APCH	FAF
004	TF	UNVET	Y	9.8/1.8	4.88	-	+1 500	-	37°25'02.5948"N 127°06'51.5321"E	3.32°/50	RNP APCH	MAPt
005	DF	TORIA	-	-	-	R	6 000	-	37°38'02.3748"N 127°21'30.6133"E	-	RNP APCH	-
006	HM	TORIA	-	270.0/262.0	5	R	@6 000	-250	37°38'02.3748"N 127°21'30.6133"E	-	RNP APCH	HOLDING 5 NM LEG

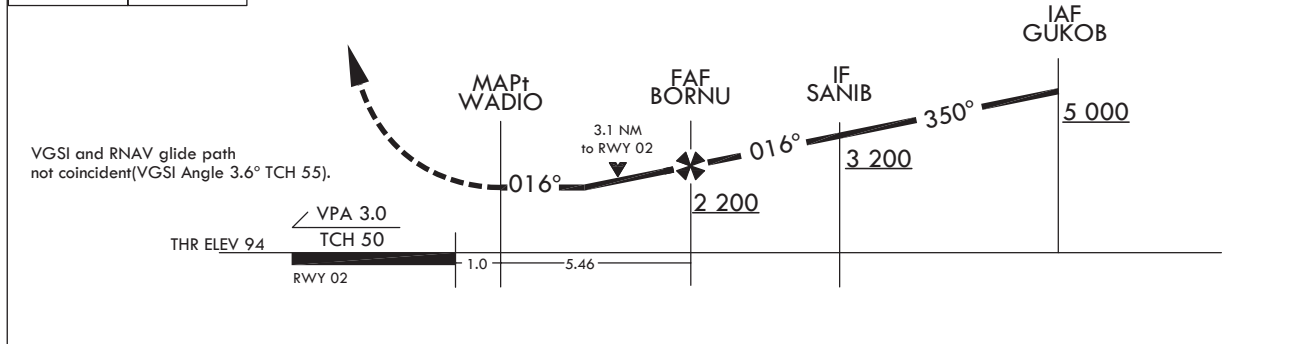
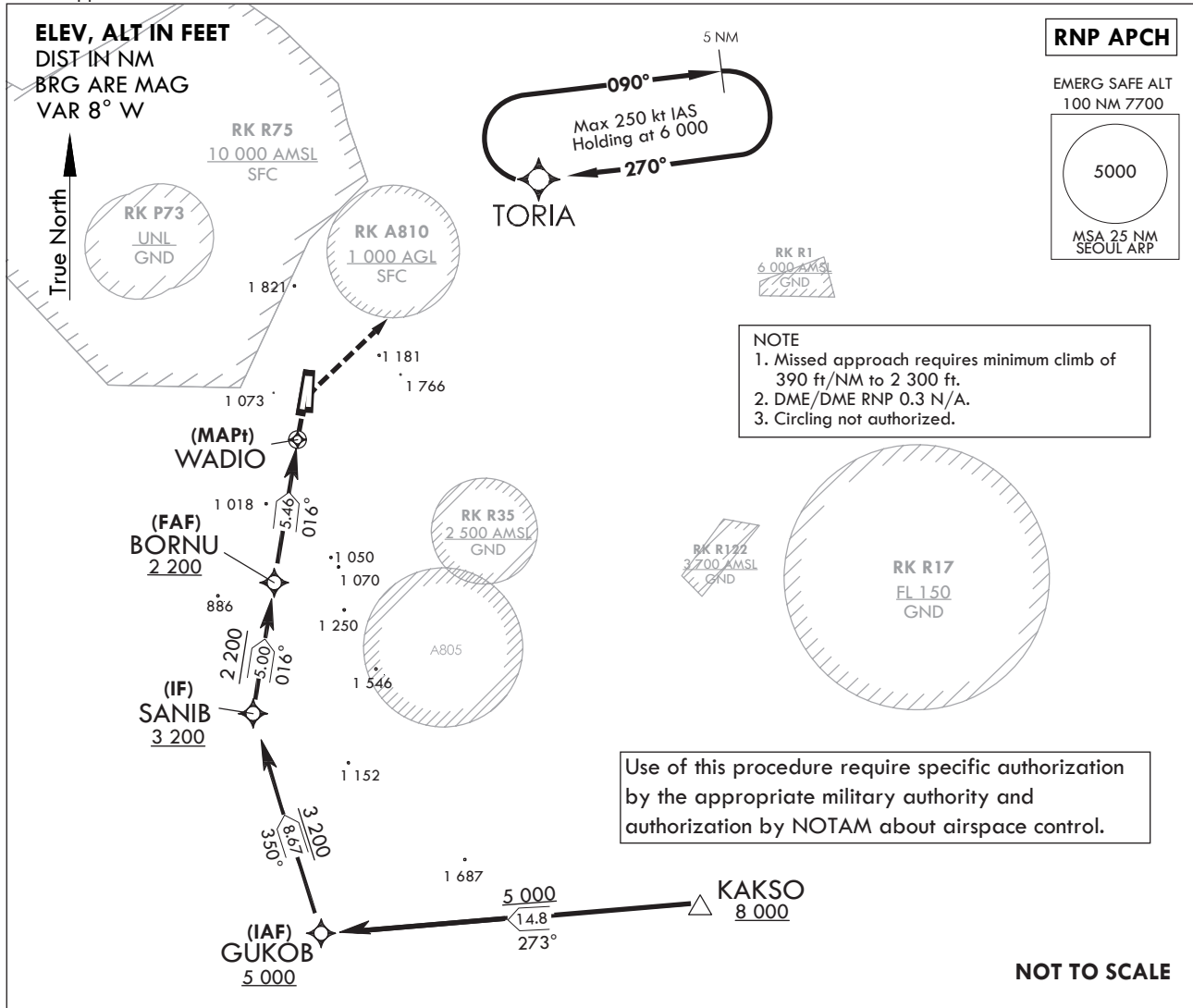
INSTRUMENT
APPROACH
CHART

AERODROME ELEV 94 ft
HEIGHTS RELATED TO
THR RWY 02 - ELEV 94 ft

SEOUL APP 123.8 363.8
SEOUL TWR 126.2
236.6 234.5

SEOUL/Seoul(RKSM)
RNP RWY 02

Note : Approach and Circle to land under U.S TERPS.



CATEGORY	A	B	C	D	E
LNNAV/ VNAV DA	N/A				N/A
LNNAV	1 240-1½ 1 146(1 200-1½)	1 240-1½ 1 146(1 200-1½)	1 240-3 1 146(1 200-3)		N/A
CIRCLING	N/A				

Change : Information of fix name(KAINA → SANIB).

AERONAUTICAL DATA TABULATION

Instrument Approach Procedure Coding Tables

RNP RWY 02

Serial Number	Path Descriptor	Waypoint Identifier	Fly -Over	Course/Track ° M(° T)	Distance (NM)	Turn Direction	Altitude (ft)	Speed (kt)	Coordinates	VPA /TCH	Navigation specification	Remarks
001	IF	GUKOB	-	-	-	-	+5 000	-	37°06'20.2845"N 127°08'01.9225"E	-	RNP APCH	IAF
002	TF	SANIB	-	349.67 / 341.67	8.67	-	+3 200	-	37°14'34.8404"N 127°04'36.9589"E	-	RNP APCH	IF
003	TF	BORNU	-	16.07 / 8.07	5	-	+2 200	-	37°19'32.2479"N 127°05'29.7485"E	-	RNP APCH	FAF
004	TF	WADIO	Y	16.10 / 8.10	5.46	-	+1 240	-	37°24'57.1290"N 127°06'27.5325"E	3.0°/50	RNP APCH	MAPt
005	DF	TORIA	-	-	-	R	@6 000	-	37°38'02.3748"N 127°21'30.6133"E	-	RNP APCH	-
006	HM	TORIA	-	270.0/262.0	5	R	@6 000	-250	37°38'02.3748"N 127°21'30.6133"E	-	RNP APCH	HOLDING 5 NM LEG

Feeder Routes

Serial Number	Path Descriptor	Waypoint Identifier	Fly -Over	Course/Track ° M(° T)	Distance (NM)	Turn Direction	Altitude (ft)	Speed (kt)	Coordinates	VPA /TCH	Navigation specification	Remarks
001	TF	KAKSO	-	-	-	-	+8 000	-	37°07'45"N 127°26'37"E	-	RNAV 1	EN ROUTE
002	TF	GUKOB	-	272.67 / 264.67	14.93	-	+5 000	-	37°06'20.2845"N 127°08'01.9225"E	-	RNP APCH	IAF

Change : Information of fix name(KAINA → SANIB).

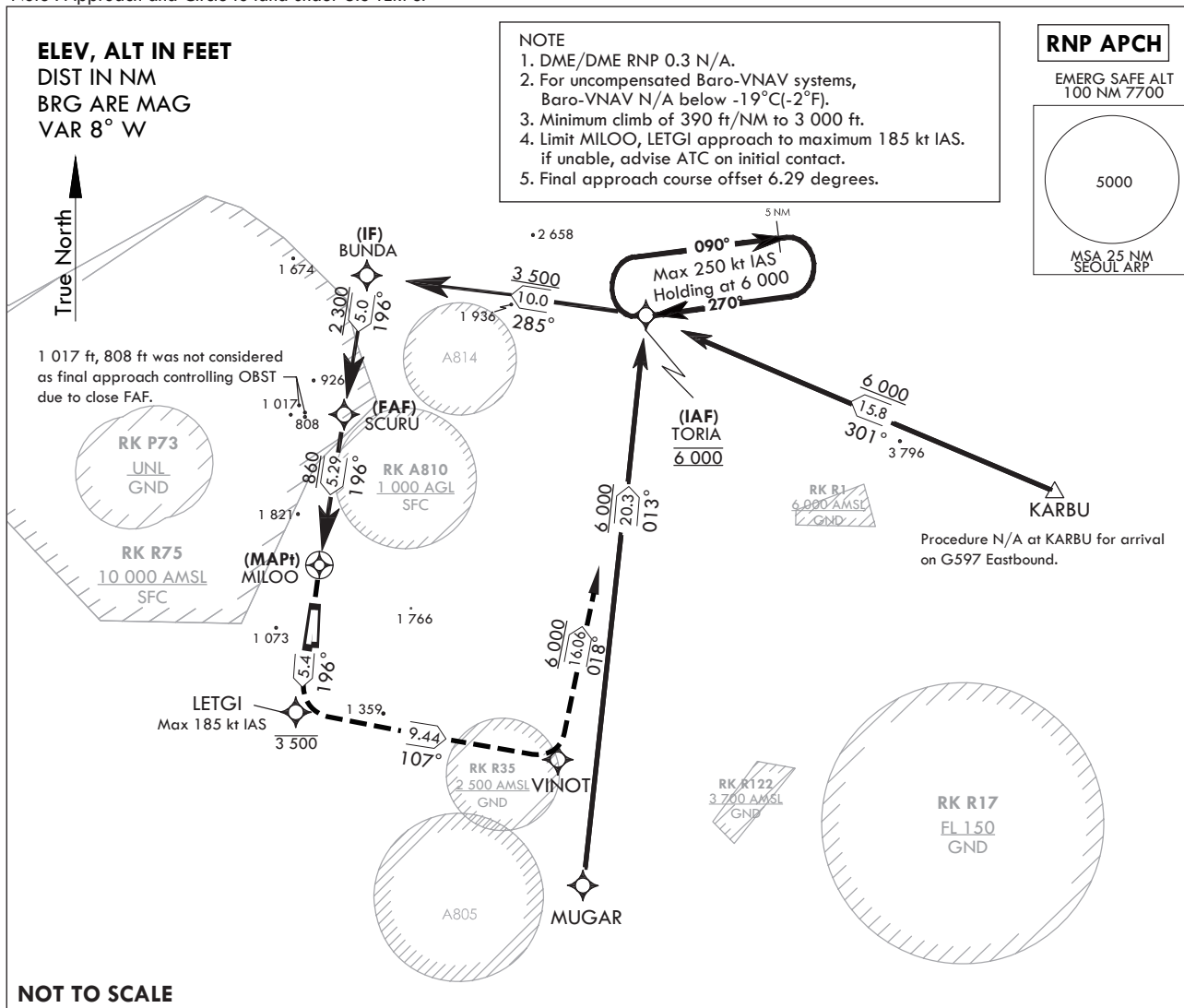
**INSTRUMENT
APPROACH
CHART**

AERODROME ELEV **94** ft
HEIGHTS RELATED TO
THR RWY 19 - ELEV **69** ft

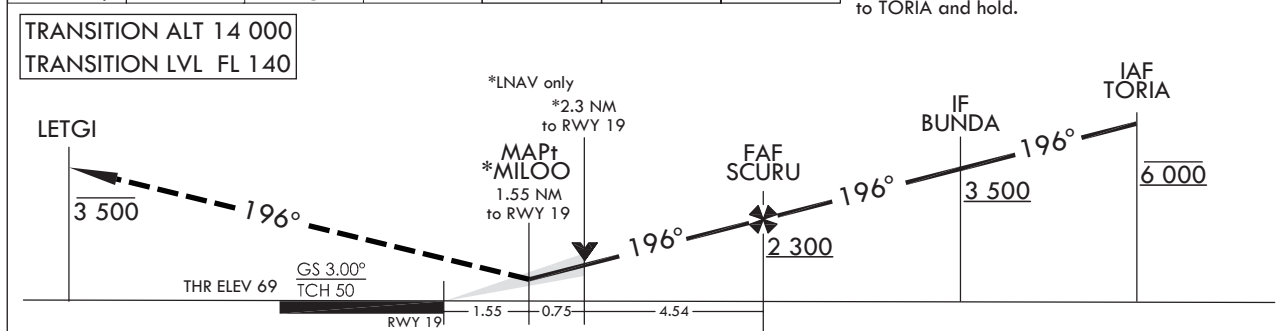
SEOUL APP 123.8 363.8
SEOUL TWR 126.2
236.6 234.5

**SEOUL/Seoul(RKSM)
RNP RWY 19**

Note : Approach and Circle to land under U.S TERPS.



							MISSED APPROACH Climb on track 196° to cross LETGI at or below 3 500 ft, then climbing left turn to 6 000 ft track 107° to VINOT, then left turn track 018° to TORIA and hold.
*MILOO *LNAV only	TR 196°	LETGI	TR 107°	VINOT	TR 018°	TORIA	



CATEGORY	A	B	C	D	E
LNAV/ VNAV DA		711-2½ 642(700-2½)			N/A
LNAV MDA		860-2½ 791(800-2½)			N/A
CIRCLING	1 020-2½ 926(1 000-2½)		1 560-3 1 466(1 500-3)	2 260-3 2 166(2 200-3)	N/A

Change : Information of RK P73 and RK R75.

AERONAUTICAL DATA TABULATION

Instrument Approach Procedure Coding Tables

RNP RWY 19

Serial Number	Path Descriptor	Waypoint Identifier	Fly -Over	Course/Track ° M(° T)	Distance (NM)	Turn Direction	Altitude (ft)	Speed (kt)	Coordinates	VPA /TCH	Navigation specification	Remarks
001	IF	TORIA	-	-	-	-	@6 000	-250	37°38'02.3748"N 127°21'30.6133"E	-	RNP APCH	IAF
002	TF	BUNDA	-	285.1/277.1	10	-	+3 500	-250	37°39'16.2513"N 127°09'00.8555"E	-	RNP APCH	IF
003	TF	SCURU	-	196.1/188.1	5	-	+2 300	-165	37°34'18.8855"N 127°08'07.7311"E	-	RNP APCH	FAF
004	TF	MILOO	Y	196.1/188.1	5.29	-	+860	-165	37°29'04.2951"N 127°07'11.5747"E	3.0°/50	RNP APCH	MAPt
005	TF	LETGI	-	196.1/188.1	5.4	-	-3 500	-185	37°23'43.154"N 127°06'14.3668"E	-	RNP APCH	-
006	TF	VINOT	-	107.1/099.1	9.44	-	6 000	-250	37°22'13.0036"N 127°17'56.0695"E	-	RNP APCH	-
007	TF	TORIA	-	018.2/10.2	16.06	-	+6 000	-250	37°38'02.3748"N 127°21'30.6133"E	-	RNP APCH	-
008	HM	TORIA	-	270.0/262.0	-	R	@6 000	-250	37°38'02.3748"N 127°21'30.6133"E	-	RNP APCH	HOLDING 5 NM LEG

Feeder Routes

Serial Number	Path Descriptor	Waypoint Identifier	Fly -Over	Course/Track ° M(° T)	Distance (NM)	Turn Direction	Altitude (ft)	Speed (kt)	Coordinates	VPA /TCH	Navigation specification	Remarks
001	TF	KARBU	-	-	-	-	-	-	37°31'59"N 127°39'52"E	-	RNAV 1	FEEDER ROUTE
002	HM	TORIA	-	300.6/292.6	15.8	-	+6 000	-250	37°38'02.3748"N 127°21'30.6133"E	-	RNP APCH	HOLDING 5 NM LEG

Feeder Routes

Serial Number	Path Descriptor	Waypoint Identifier	Fly -Over	Course/Track ° M(° T)	Distance (NM)	Turn Direction	Altitude (ft)	Speed (kt)	Coordinates	VPA /TCH	Navigation specification	Remarks
001	TF	MUGAR	-	-	-	-	-	-	37°17'45.54"N 127°19'08.61"E	-	RNAV 1	FEEDER ROUTE
002	HM	TORIA	-	13.3/5.3	20.34	-	+6 000	-250	37°38'02.3748"N 127°21'30.6133"E	-	RNP APCH	HOLDING 5 NM LEG

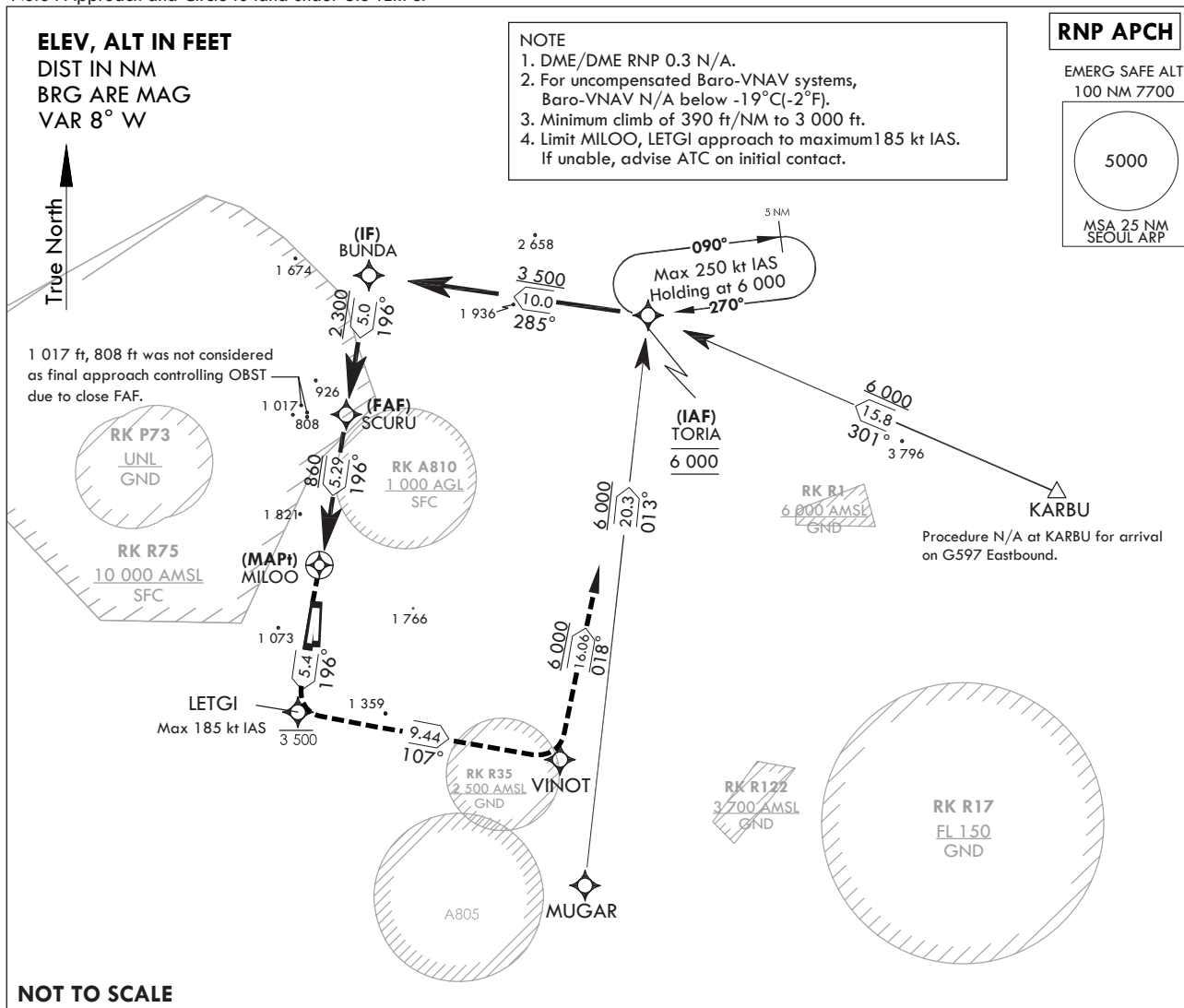
**INSTRUMENT
APPROACH
CHART**

AERODROME ELEV **94** ft
HEIGHTS RELATED TO
THR RWY 20 - ELEV **70** ft

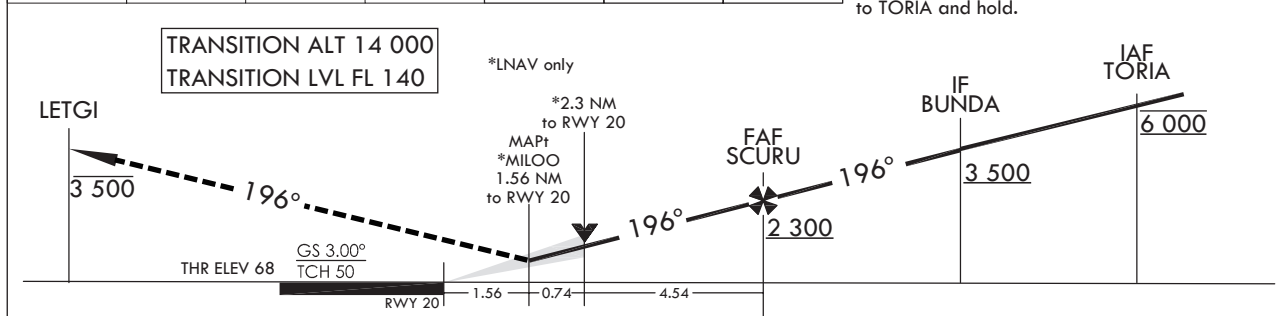
SEOUL APP 123.8 363.8
SEOUL TWR 126.2
236.6 234.5

SEOUL/Seoul(RKSM)
RNP RWY 20

Note : Approach and Circle to land under U.S TERPS.



							MISSED APPROACH Climb on track 196° to cross LETGI at or below 3 500 ft, then climbing left turn to 6 000 ft track 107° to VINOT, then left turn track 018° to TORIA and hold.
*MILOO *LNAV only	TR 196°	LETGI	TR 107°	VINOT	TR 018°	TORIA	



CATEGORY	A	B	C	D	E
LANV/ VNAV DA		711-2½	641(700-2½)		N/A
LNAV MDA		860-2½	790(800-2½)		N/A
CIRCLING	1 020-2½	926(1 000-2½)	1 560-3 1 466(1 500-3)	2 260-3 2 166(2 200-3)	N/A

Change : Information of RK P73 and RK R75.

AERONAUTICAL DATA TABULATION

Instrument Approach Procedure Coding Tables

RNP RWY 20

Serial Number	Path Descriptor	Waypoint Identifier	Fly -Over	Course/Track ° M(° T)	Distance (NM)	Turn Direction	Altitude (ft)	Speed (kt)	Coordinates	VPA /TCH	Navigation specification	Remarks
001	IF	TORIA	-	-	-	-	@6 000	-250	37°38'02.3748"N 127°21'30.6133"E	-	RNP APCH	IAF
002	TF	BUNDA	-	285.1/277.1	1.0	-	+3 500	-250	37°39'16.2513"N 127°09'00.8555"E	-	RNP APCH	IF
003	TF	SCURU	-	196.1/188.1	5	-	+2 300	-165	37°34'18.8855"N 127°08'07.7311"E	-	RNP APCH	FAF
004	TF	MILOO	Y	196.1/188.1	5.29	-	+860	-165	37°29'04.2951"N 127°07'11.5747"E	3.0°/50	RNP APCH	MAPt
005	TF	LETGI	-	196.1/188.1	5.4	-	-3 500	-185	37°23'43.154"N 127°06'14.3668"E	-	RNP APCH	-
006	TF	VINOT	-	107.1/099.1	9.44	-	6 000	-250	37°22'13.0036"N 127°17'56.0695"E	-	RNP APCH	-
007	TF	TORIA	-	018.2/10.2	16.058	-	+6 000	-250	37°38'02.3748"N 127°21'30.6133"E	-	RNP APCH	-
008	HM	TORIA	-	270.0/262.0	-	R	@6 000	-250	37°38'02.3748"N 127°21'30.6133"E	-	RNP APCH	HOLDING 5 NM LEG

Feeder Routes

Serial Number	Path Descriptor	Waypoint Identifier	Fly -Over	Course/Track ° M(° T)	Distance (NM)	Turn Direction	Altitude (ft)	Speed (kt)	Coordinates	VPA /TCH	Navigation specification	Remarks
001	TF	KARBU	-	-	-	-	-	-	37°31'59"N 127°39'52"E	-	RNAV 1	FEEDER ROUTE
002	HM	TORIA	-	300.6/292.6	15.8	-	+6 000	-250	37°38'02.3748"N 127°21'30.6133"E	-	RNP APCH	HOLDING 5 NM LEG

Feeder Routes

Serial Number	Path Descriptor	Waypoint Identifier	Fly -Over	Course/Track ° M(° T)	Distance (NM)	Turn Direction	Altitude (ft)	Speed (kt)	Coordinates	VPA /TCH	Navigation specification	Remarks
001	TF	MUGAR	-	-	-	-	-	-	37°17'45.54"N 127°19'08.61"E	-	RNAV 1	FEEDER ROUTE
002	HM	TORIA	-	13.3/5.3	20.34	-	+6 000	-250	37°38'02.3748"N 127°21'30.6133"E	-	RNP APCH	HOLDING 5 NM LEG

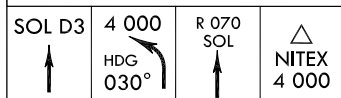
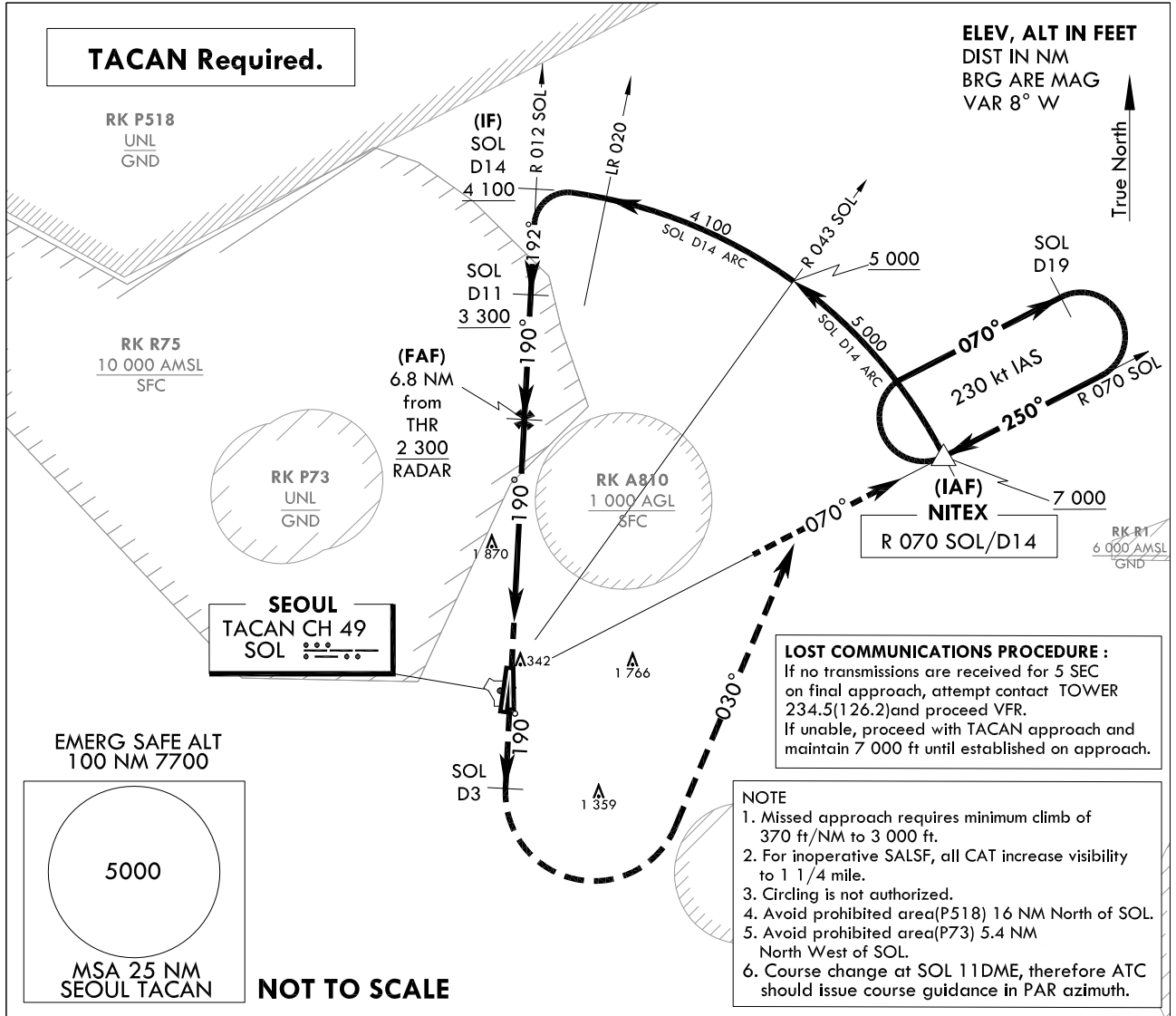
**INSTRUMENT
APPROACH
CHART**

AERODROME ELEV 93 ft
HEIGHTS RELATED TO
THR RWY 19 - ELEV 68 ft

SEOUL APP 123.8 363.8
SEOUL TWR 126.2
234.5 236.6

SEOUL/Seoul(RKSM)
PAR Z
RWY 19

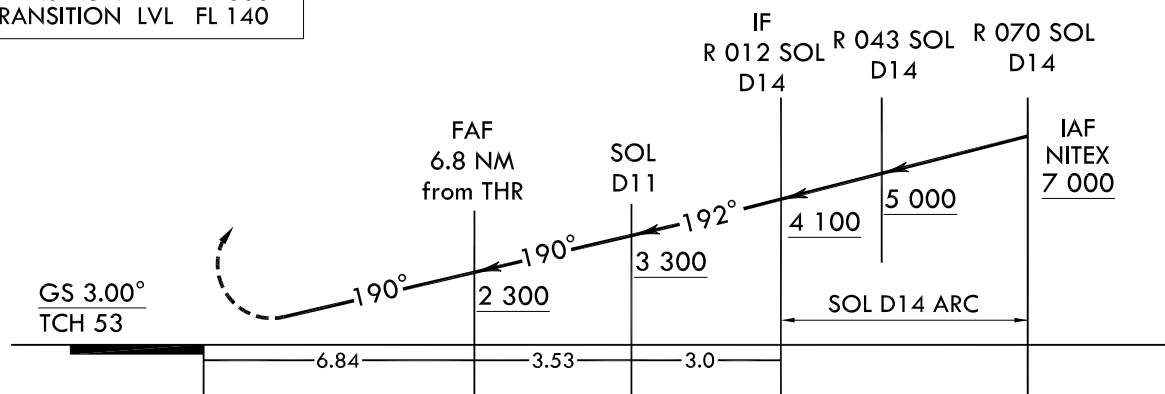
Note : Approach and Circle to land under U.S. TERPS.



Missed Approach Climb Rate table

Knots	60	120	180	240	300	TO
V/V(fpm)	370	740	1 110	1 480	1 850	3 000

TRANSITION ALT 14 000
TRANSITION LVL FL 140



MISSED APPROACH

Climb to 4 000 ft via HDG 190° to
SOL 3DME and climbing left turn HDG 030°
to intercept R 070 SOL, then climb to
7 000 ft on R 070 SOL to NITEX and hold,
continue climb-in-holding to 7 000 ft.

CATEGORY	A	B	C	D	E
S-PAR RWY 19		465 / 55	393 (400 - 1)		

Change : Information of RK P73 and RK R75.

INTENTIONALLY

LEFT

BLANK

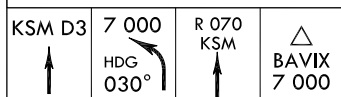
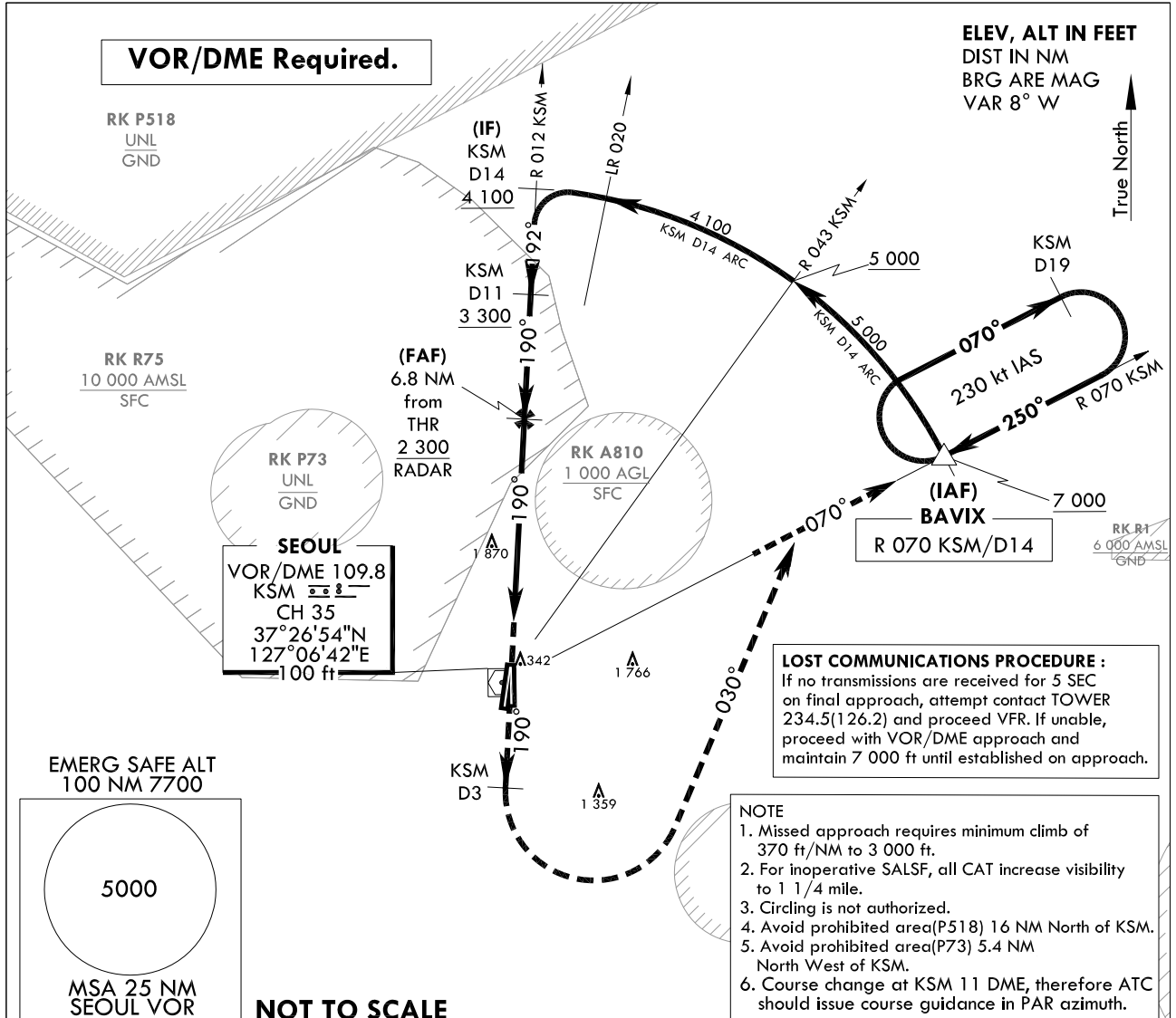
**INSTRUMENT
APPROACH
CHART**

AERODROME ELEV 93 ft
HEIGHTS RELATED TO
THR RWY 19 - ELEV 68 ft

SEOUL APP 123.8 363.8
SEOUL TWR 126.2
234.5 236.6

SEOUL/Seoul(RKSM)
PAR Y
RWY 19

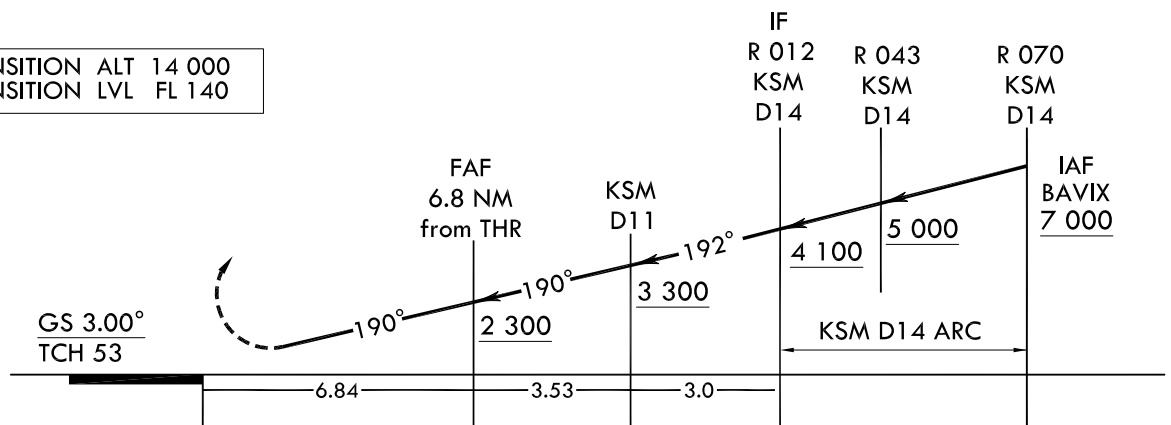
Note : Approach and Circle to land under U.S. TERPS.



Missed Approach Climb Rate table

Knots	60	120	180	240	300	TO
V/V(fpm)	370	740	1 110	1 480	1 850	3 000

TRANSITION ALT 14 000
TRANSITION LVL FL 140



MISSED APPROACH

Climb to 4 000 ft via HDG 190° to KSM
3 DME and climbing left turn HDG 030° to
intercept R 070 KSM, then climb to 7 000 ft
on R 070 KSM to BAVIX and hold, continue
climb-in-holding to 7 000 ft.

CATEGORY	A	B	C	D	E
S-PAR RWY 19		465 / 55	393 (400 - 1)		

Change : Information of RK P73 and RK R75.

INTENTIONALLY

LEFT

BLANK

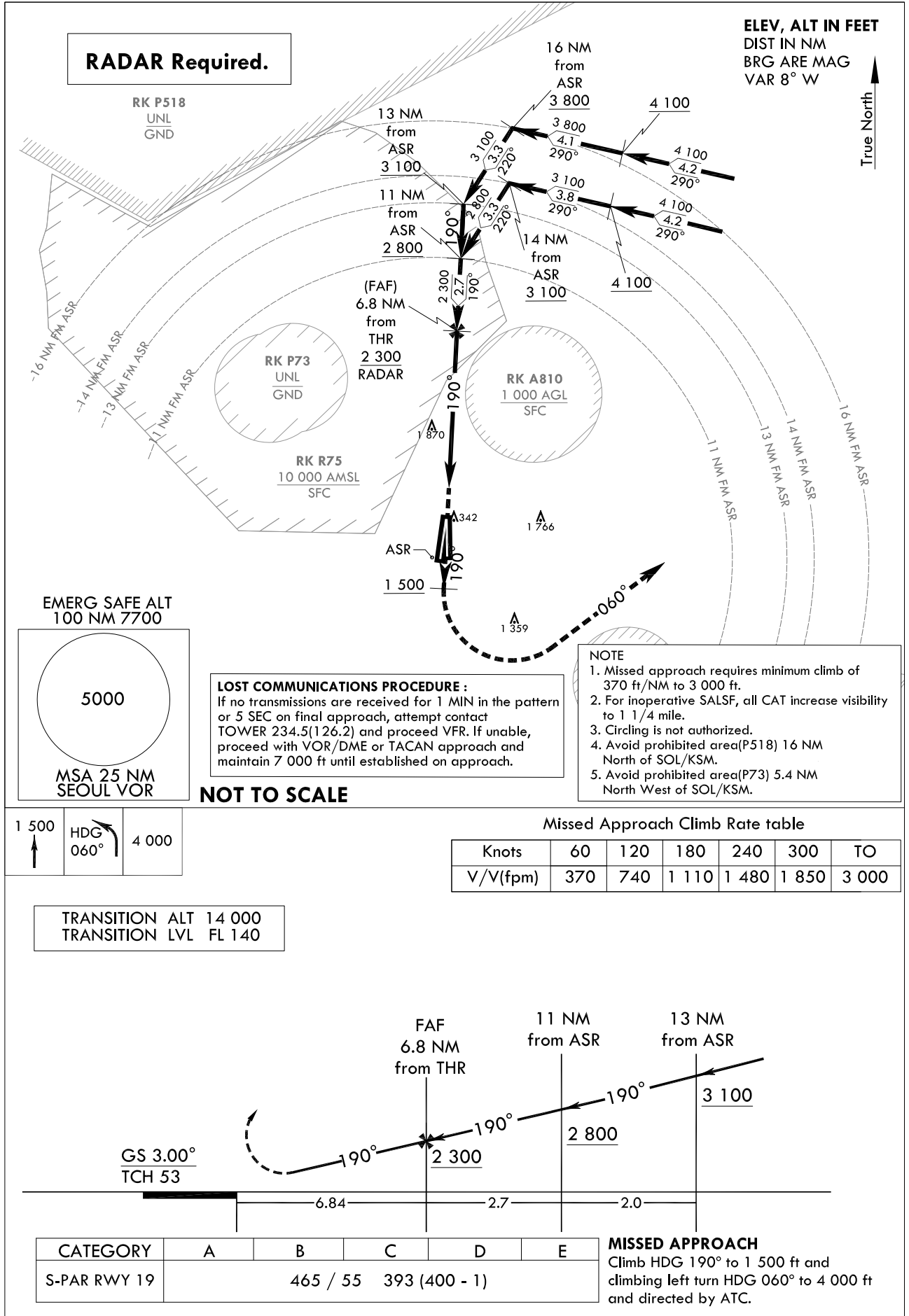
**INSTRUMENT
APPROACH
CHART**

AERODROME ELEV 93 ft
HEIGHTS RELATED TO
THR RWY 19 - ELEV 68 ft

SEOUL APP 123.8 363.8
SEOUL TWR 126.2
234.5 236.6

SEOUL/Seoul(RKSM)
PAR X
RWY 19

Note : Approach and Circle to land under U.S. TERPS.



Change : Information of RK P73 and RK R75.

INTENTIONALLY

LEFT

BLANK

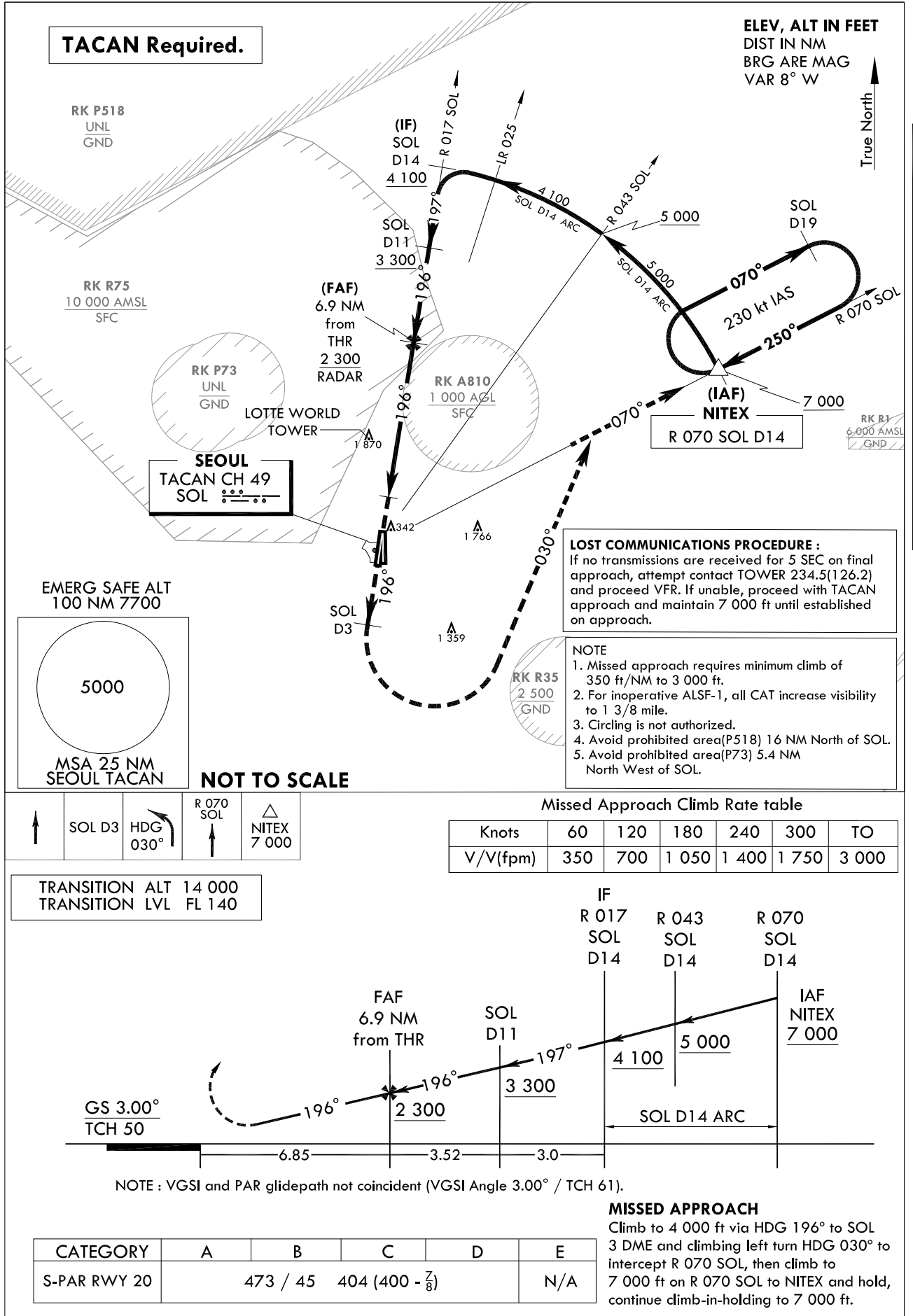
**INSTRUMENT
APPROACH
CHART**

AERODROME ELEV 93 ft
HEIGHTS RELATED TO
THR RWY 20 - ELEV **68 ft**
HIGHEST ELEV TDZ 69 ft

SEOUL APP 123.8 363.8
SEOUL TWR 126.2
234.5 236.6

SEOUL/Seoul(RKSM)
PAR Z
RWY 20

Note : Approach and Circle to land under U.S. TERPS.



Change : Information of RK P73 and RK R75.

INTENTIONALLY

LEFT

BLANK

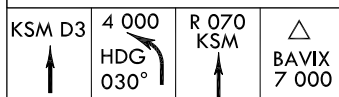
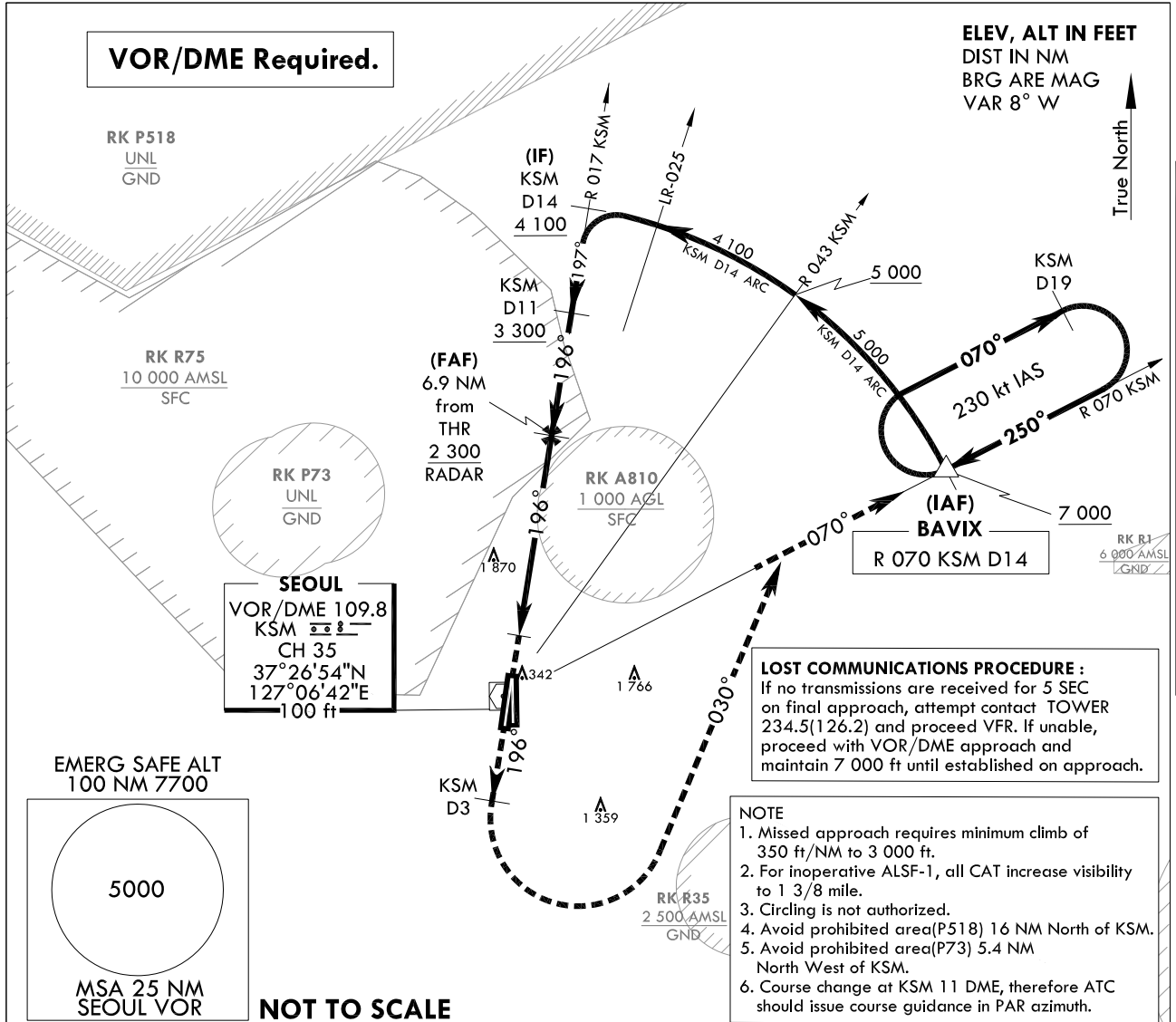
**INSTRUMENT
APPROACH
CHART**

AERODROME ELEV 93 ft
HEIGHTS RELATED TO
THR RWY 20 - ELEV 68 ft
HIGHEST ELEV TDZ 69 ft

SEOUL APP 123.8 363.8
SEOUL TWR 126.2
234.5 236.6

SEOUL/Seoul(RKSM)
PAR Y
RWY 20

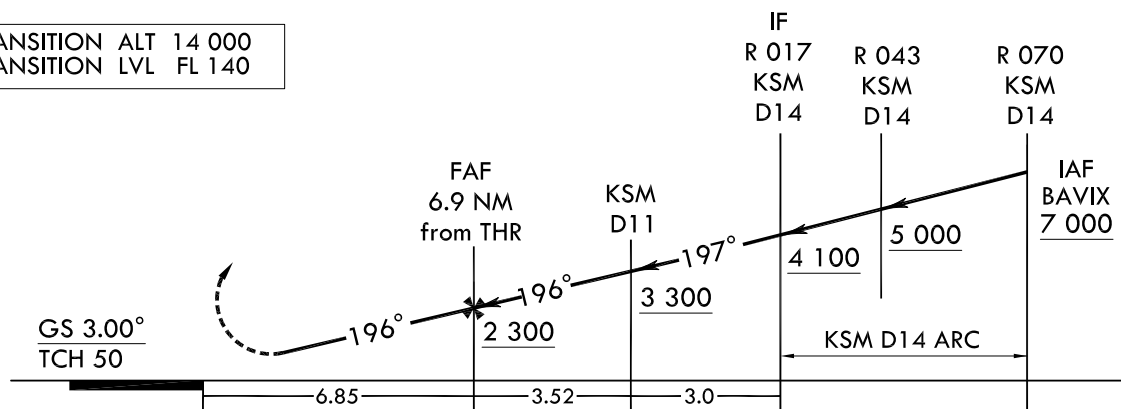
Note : Approach and Circle to land under U.S. TERPS.



Missed Approach Climb Rate table

Knots	60	120	180	240	300	TO
V/V(fpm)	350	700	1 050	1 400	1 750	3 000

TRANSITION ALT 14 000
TRANSITION LVL FL 140



NOTE : VGSI and PAR glidepath not coincident (VGSI Angle 3.00° / TCH 61).

MISSED APPROACH

Climb to 4 000 ft via HDG 196° to KSM
3 DME and climbing left turn HDG 030° to
intercept R 070 KSM, then climb to 7 000 ft
on R 070 KSM to BAVIX and hold, continue
climb-in-holding to 7 000 ft.

CATEGORY	A	B	C	D	E
S-PAR RWY 20	473 / 45	404 (400 - 7/8)			N/A

Change : Information of RK P73 and RK R75.

INTENTIONALLY

LEFT

BLANK

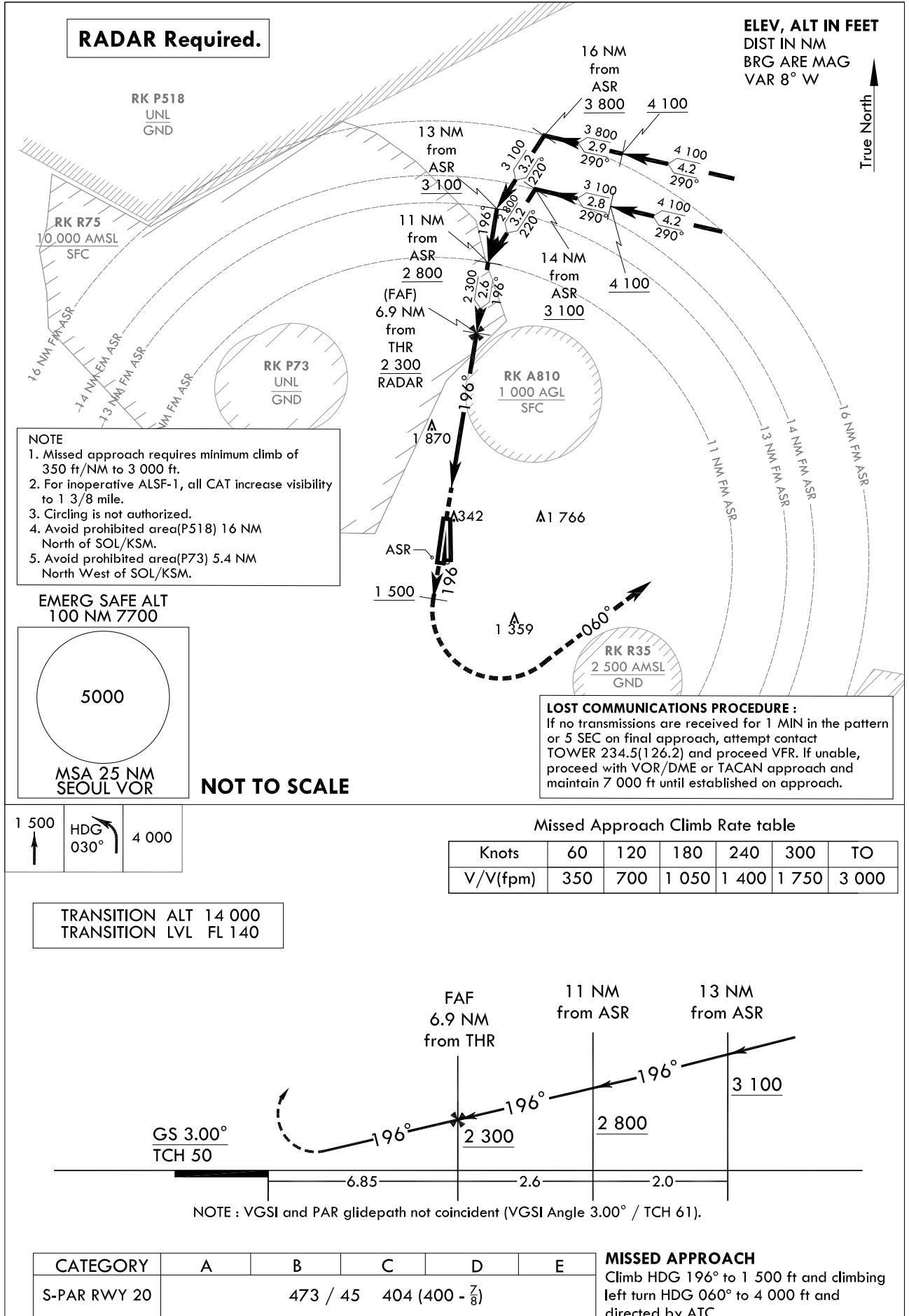
**INSTRUMENT
APPROACH
CHART**

AERODROME ELEV 93 ft
HEIGHTS RELATED TO
THR RWY 20 - ELEV **68 ft**
HIGHEST ELEV TDZ 69 ft

SEOUL APP 123.8 363.8
SEOUL TWR 126.2
234.5 236.6

SEOUL/Seoul(RKSM)
PAR X
RWY 20

Note : Approach and Circle to land under U.S. TERPS.



Change : Information of RK P73 and RK R75.

INTENTIONALLY

LEFT

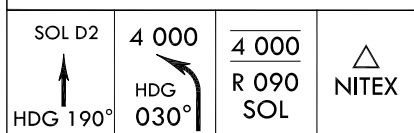
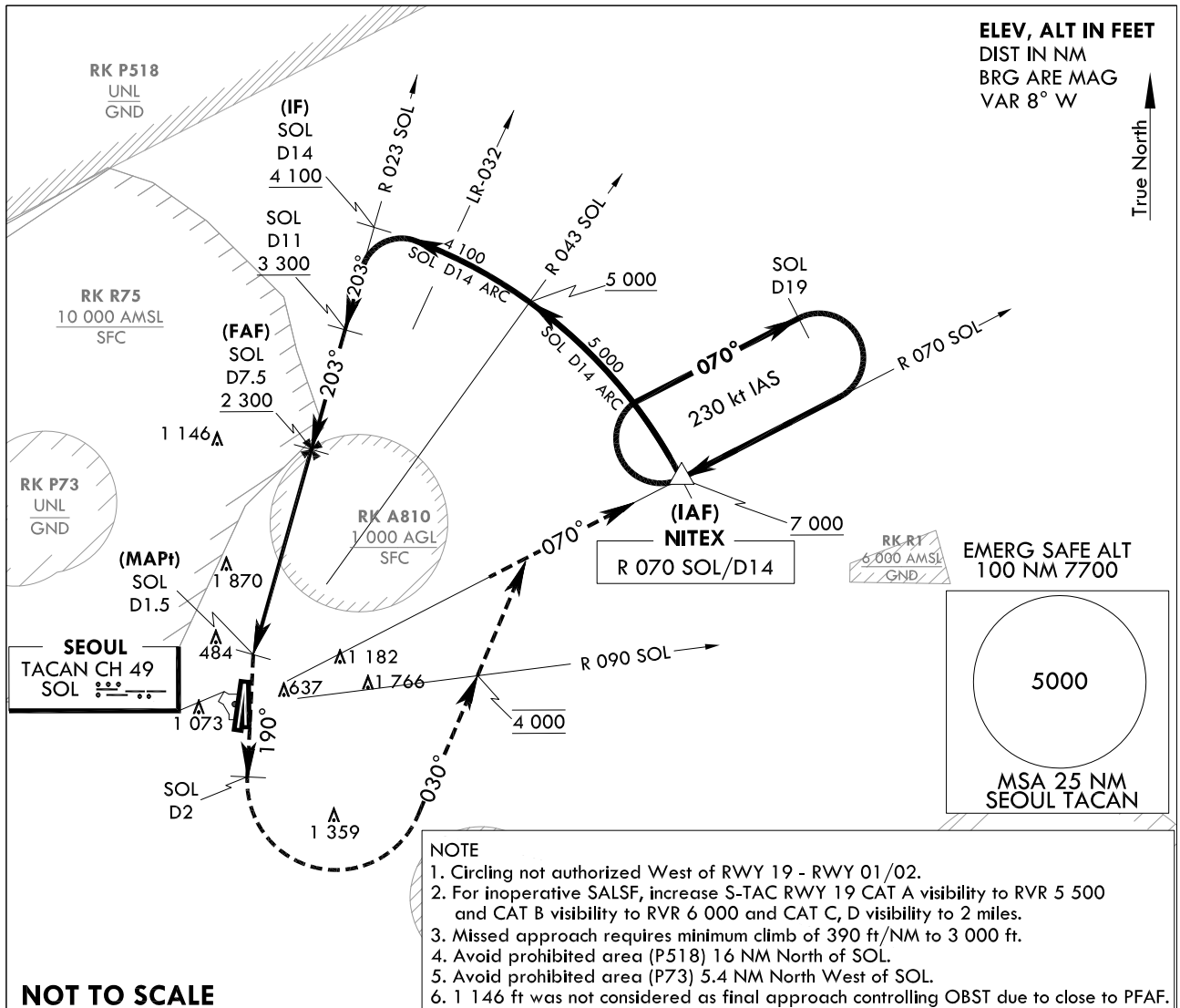
BLANK

**INSTRUMENT
APPROACH
CHART**

AERODROME ELEV 93 ft
HEIGHTS RELATED TO
THR RWY 19 - ELEV 68 ft

SEOUL APP 123.8 363.8
SEOUL TWR 126.2
234.5 236.6

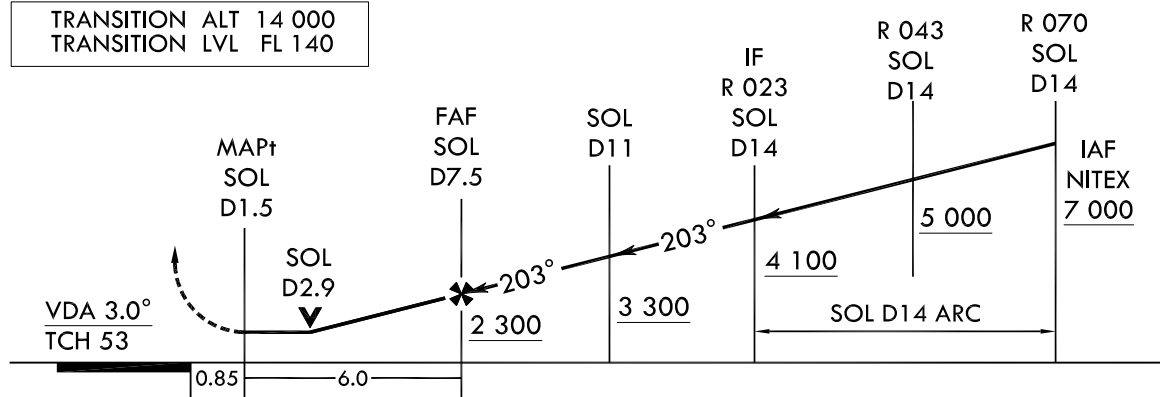
SEOUL/Seoul(RKSM)
TACAN
RWY 19



Missed Approach Climb Rate table

Knots	60	120	180	240	300	TO
V/V(fpm)	390	770	1 150	1 530	1 910	3 000

TRANSITION ALT 14 000
TRANSITION LVL FL 140



CATEGORY	A	B	C	D	E
S-TAC RWY 19	820 / 40 748 (800 - 3/4)	820 / 55 748 (800 - 1)	820 - 1 7/8 748 (800 - 1 7/8)		N/A
Circling	1 020 - 1 1/4 927 (1 000 - 1 1/4)		1 560 - 3 1 467 (1 500 - 3)	2 260 - 3 2 167 (2 200 - 3)	N/A

MISSED APPROACH

Climb HDG 190° to SOL 2 DME and climbing left turn HDG 030° to cross R 090 SOL at 4 000 ft, then R 070 SOL to NITEX and hold, continue climb-in-holding to 7 000 ft.

Change : Information of RK P73 and RK R75.

INTENTIONALLY

LEFT

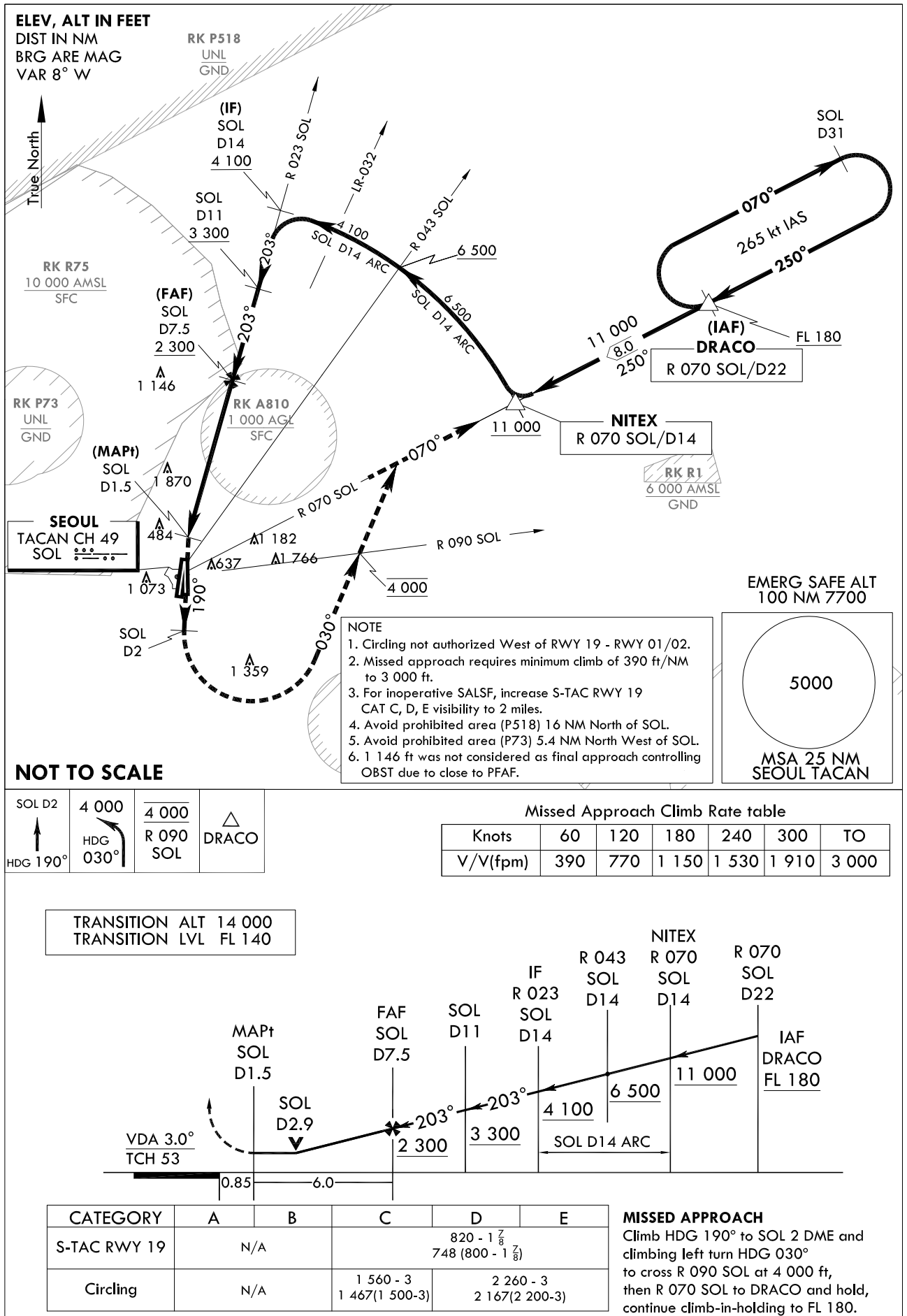
BLANK

**INSTRUMENT
APPROACH
CHART**

AERODROME ELEV 93 ft
HEIGHTS RELATED TO
THR RWY 19 - ELEV 68 ft

SEOUL APP 123.8 363.8
SEOUL TWR 126.2
234.5 236.6

SEOUL/Seoul(RKSM)
HI-TACAN
RWY 19



Change : Information of RK P73 and RK R75.

INTENTIONALLY

LEFT

BLANK

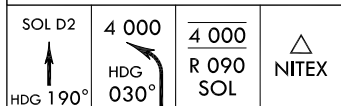
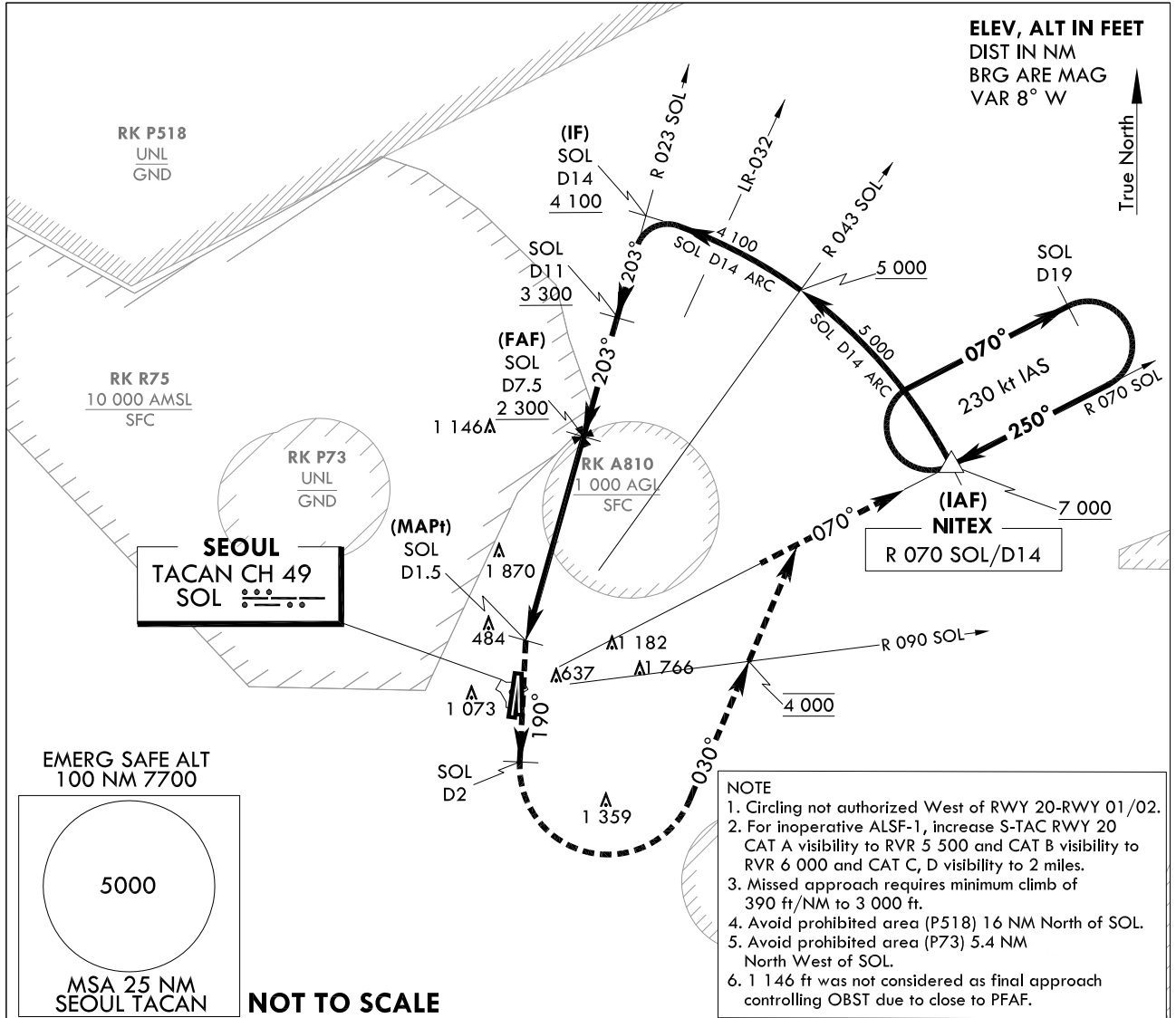
**INSTRUMENT
APPROACH
CHART**

AERODROME ELEV 93 ft
HEIGHTS RELATED TO
THR RWY 20 - ELEV **68 ft**
HIGHEST ELEV TDZ 69 ft

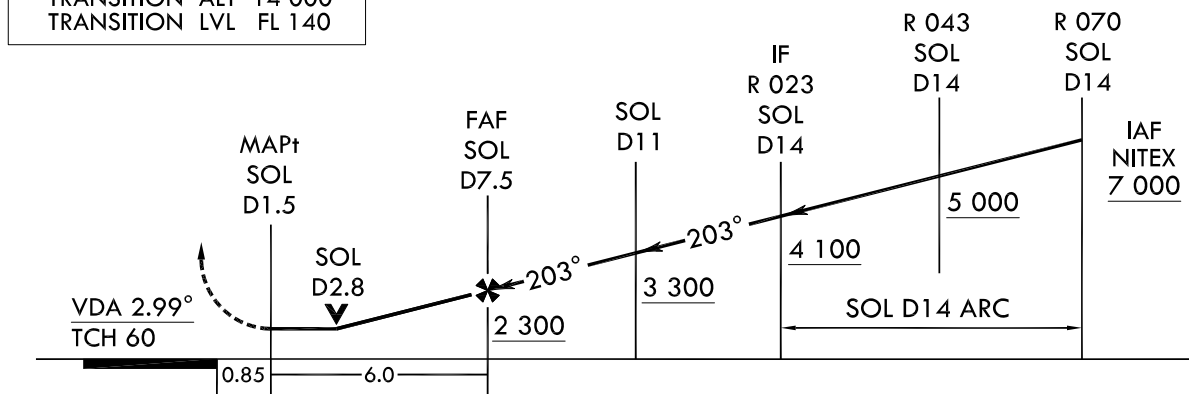
SEOUL APP 123.8 363.8
SEOUL TWR 126.2
234.5 236.6

SEOUL/Seoul(RKSM)
TACAN
RWY 20

Note : Approach and Circle to land under U.S. TERPS.



TRANSITION ALT 14 000
TRANSITION LVL FL 140



CATEGORY	A	B	C	D	E
S-TAC RWY 20	820 / 35 751 (800 - 3/8)	820 / 40 751 (800 - 3/4)	820 - 1 3/4 751 (800 - 1 3/4)		N/A
Circling	1 020 - 1 1/4 927 (1 000 - 1 1/4)		1 560 - 3 1 467 (1 500 - 3)	2 260 - 3 2 167 (2 200 - 3)	N/A

MISSED APPROACH

Climb HDG 190° to SOL 2 DME and climbing left turn HDG 030° to cross R 090 SOL at 4 000 ft, then R 070 SOL to NITEX and hold, continue climb-in-holding to 7 000 ft.

Change : Information of RK P73 and RK R75.

INTENTIONALLY

LEFT

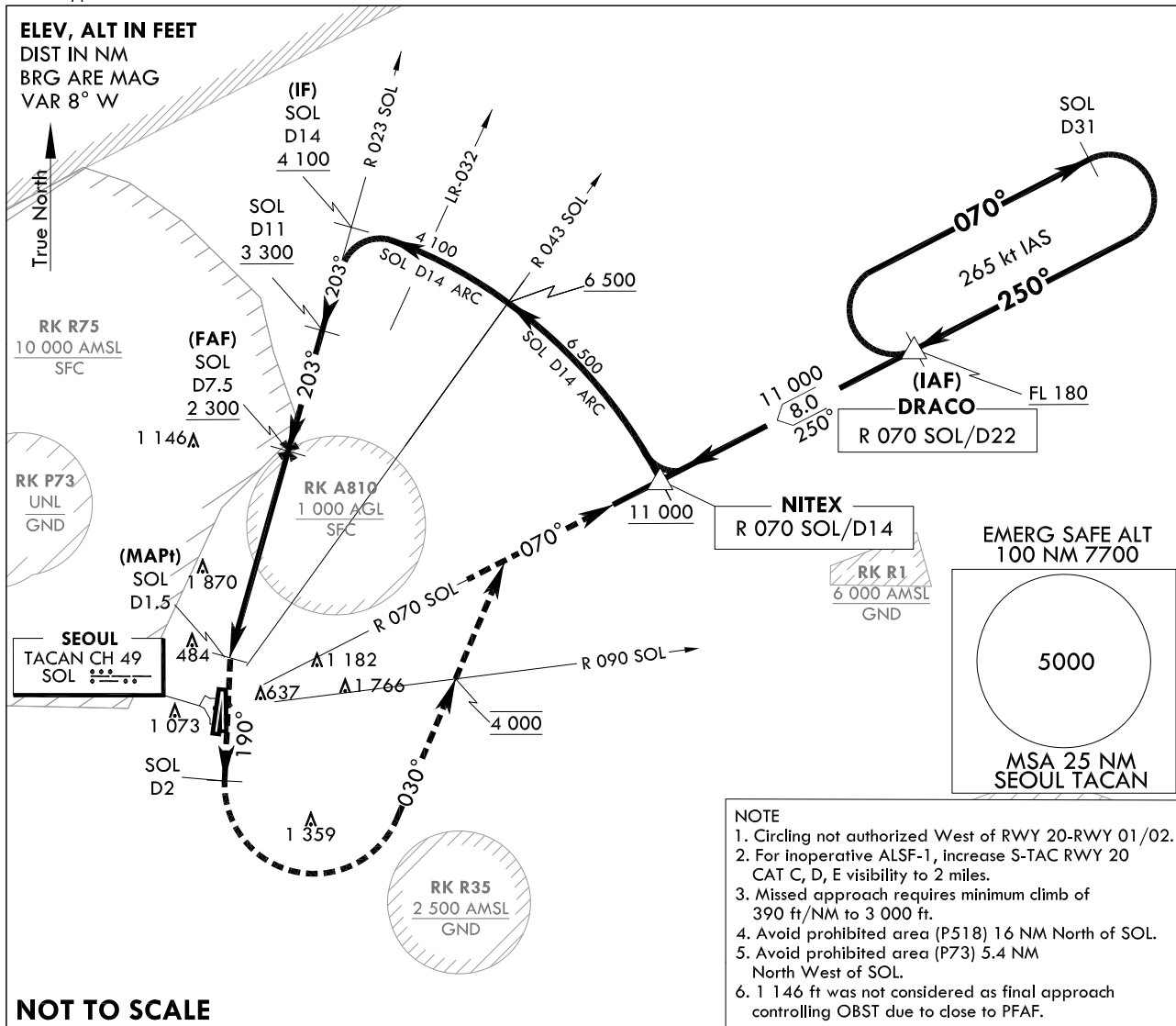
BLANK

AERODROME ELEV 93 ft
 HEIGHTS RELATED TO
 THR RWY 20 - ELEV **68 ft**
 HIGHEST ELEV TDZ 69 ft

SEOUL APP	123.8	363.8
SEOUL TWR	126.2	
	234.5	236.6

SEOUL/Seoul(RKSM)
HI-TACAN
RWY 20

Note : Approach and Circle to land under U.S. TERPS.



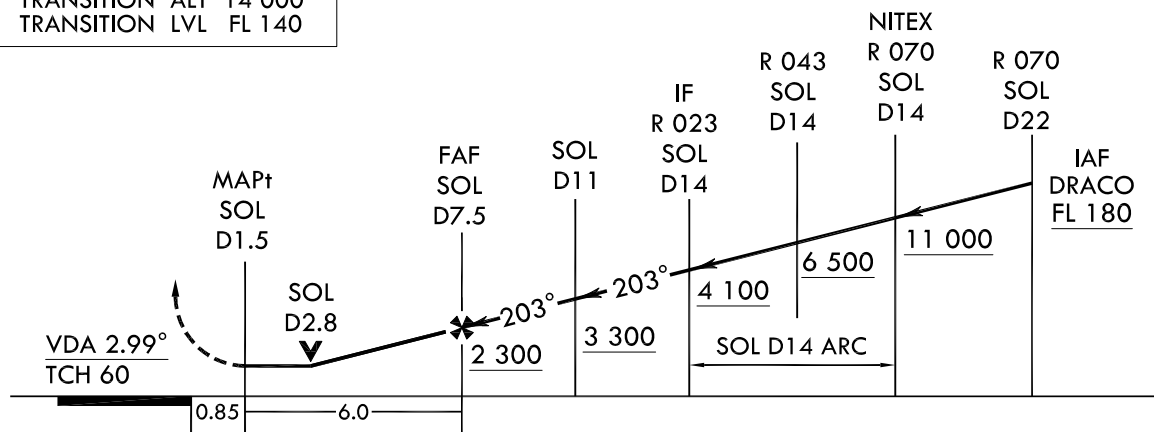
NOT TO SCALE

SOL D2 ↑ HDG 190°	4 000 HDG 030°	4 000 R 090 SOL	△ DRACO
-------------------------	-------------------	-----------------------	------------

Missed Approach Climb Rate table

Knots	60	120	180	240	300	TO
V/V(fpm)	390	770	1 150	1 530	1 910	3 000

TRANSITION	ALT	14 000
TRANSITION	LVL	FL 140



CATEGORY	A	B	C	D	E
S-TAC RWY 20	N/A		$\begin{array}{c} 820 - 1\frac{3}{4} \\ 751 (800 - 1\frac{1}{2}) \end{array}$		
Circling	N/A		$\begin{array}{c} 1\ 560 - 3 \\ 1\ 467(1\ 500-3) \end{array}$	$\begin{array}{c} 2\ 260 - 3 \\ 2\ 167(2\ 200-3) \end{array}$	

MISSED APPROACH

Climb HDG 190° to SOL 2 DME and climbing left turn HDG 030° to cross R 090 SOL at 4 000 ft, then R 070 SOL to DRACO and hold, continue climb-in-holding to FL 180.

Change : Information of RK P73 and RK R75.

INTENTIONALLY

LEFT

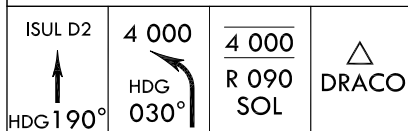
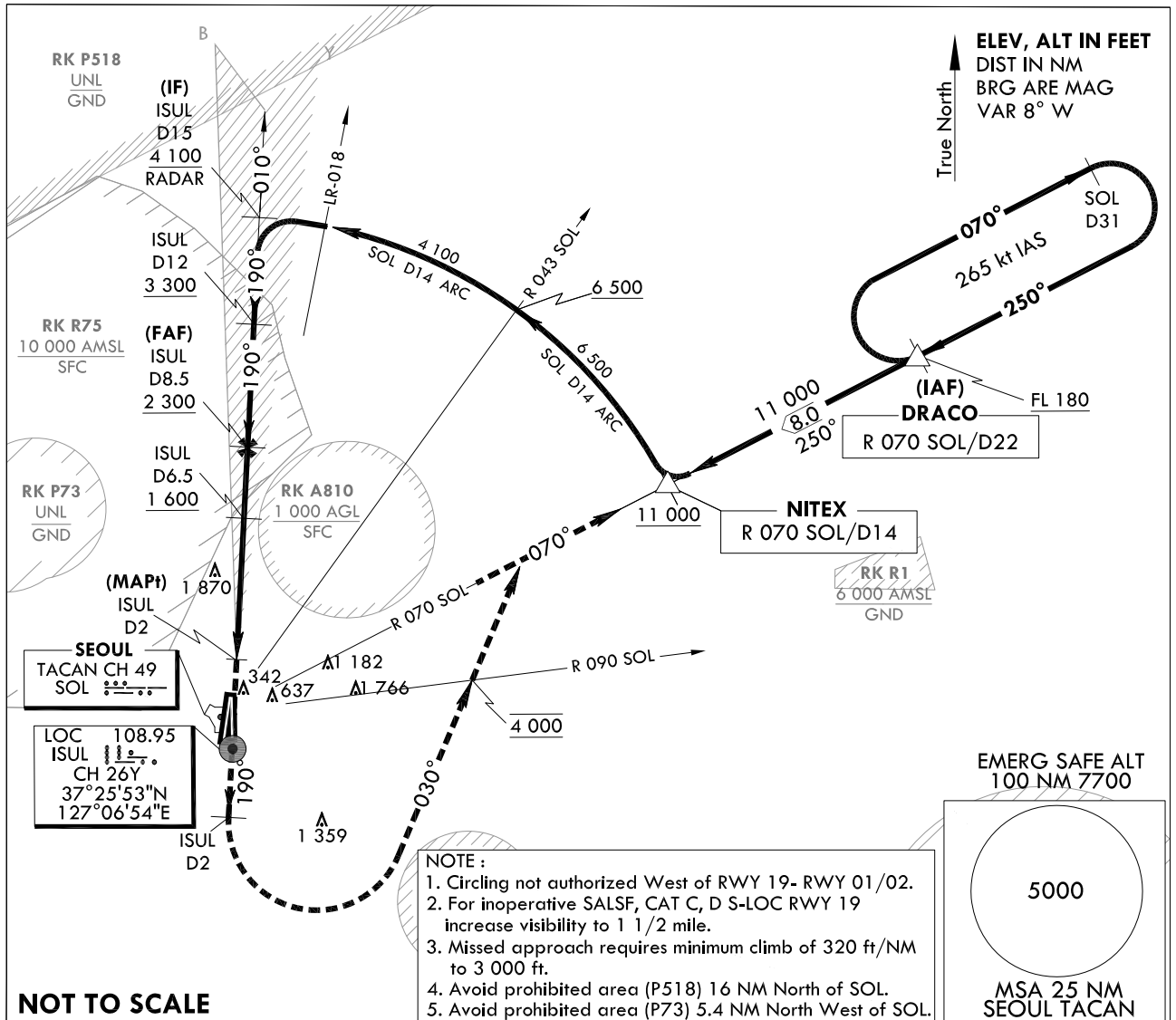
BLANK

**INSTRUMENT
APPROACH
CHART**

AERODROME ELEV 93 ft
HEIGHTS RELATED TO
THR RWY 19 - ELEV 68 ft

SEOUL APP 123.8 363.8
SEOUL TWR 126.2
234.5 236.6

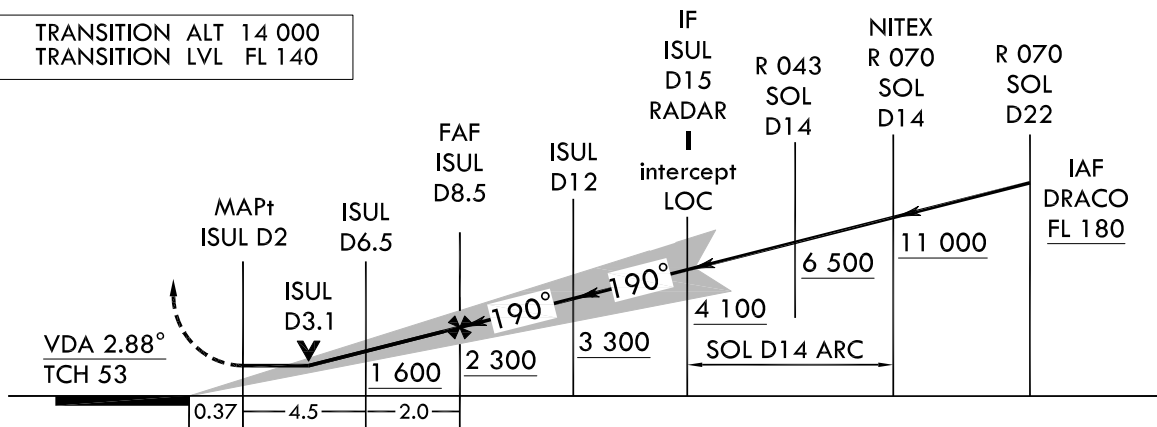
SEOUL/Seoul(RKSM)
HI-LOC/DME
RWY 19



Missed Approach Climb Rate table

Knots	60	120	180	240	300	TO
V/V(fpm)	320	640	960	1 280	1 590	3 000

TRANSITION ALT 14 000
TRANSITION LVL FL 140



CATEGORY	A	B	C	D	E
S-LOC RWY 19	N/A		600 - 1 1/4	528 (600 - 1 1/4)	
Circling	N/A		1 560 - 3 1 467(1 500-3)	2 260 - 3 2 167(2 200-3)	

MISSED APPROACH

Climb HDG 190° to ISUL 2 DME and climbing left turn HDG 030° to cross R 090 SOL TACAN at 4 000 ft, then R 070 SOL to DRACO and hold, continue climb-in-holding to FL 180.

Change : Information of RK P73 and RK R75.

INTENTIONALLY

LEFT

BLANK

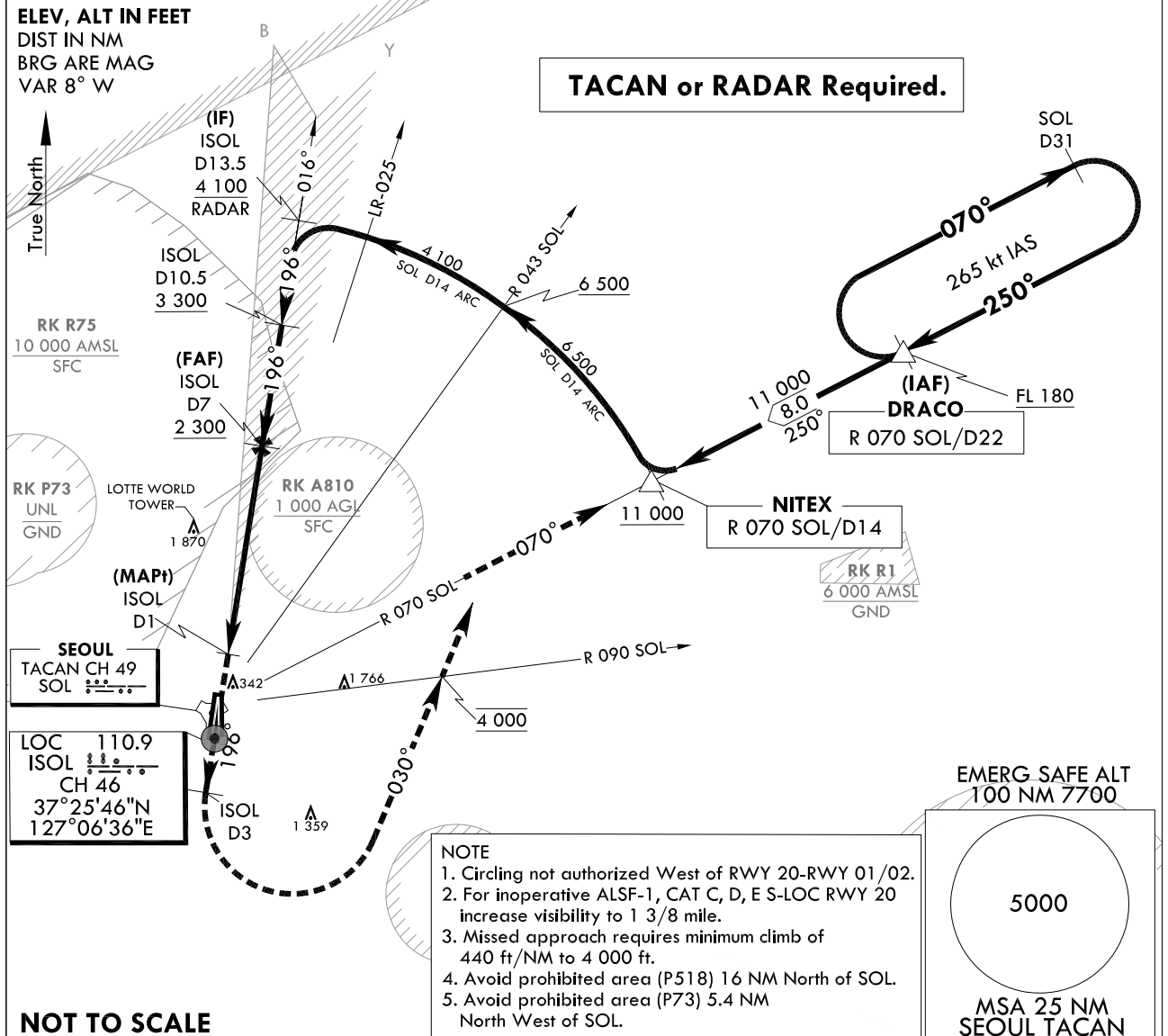
**INSTRUMENT
APPROACH
CHART**

AERODROME ELEV 93 ft
HEIGHTS RELATED TO
THR RWY 20 - ELEV 68 ft
HIGHEST ELEV TDZ 69 ft

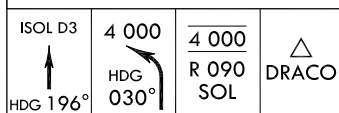
SEOUL APP 123.8 363.8
SEOUL TWR 126.2
234.5 236.6

SEOUL/Seoul(RKSM)
HI-LOC/DME
RWY 20

Note : Approach and Circle to land under U.S. TERPS.



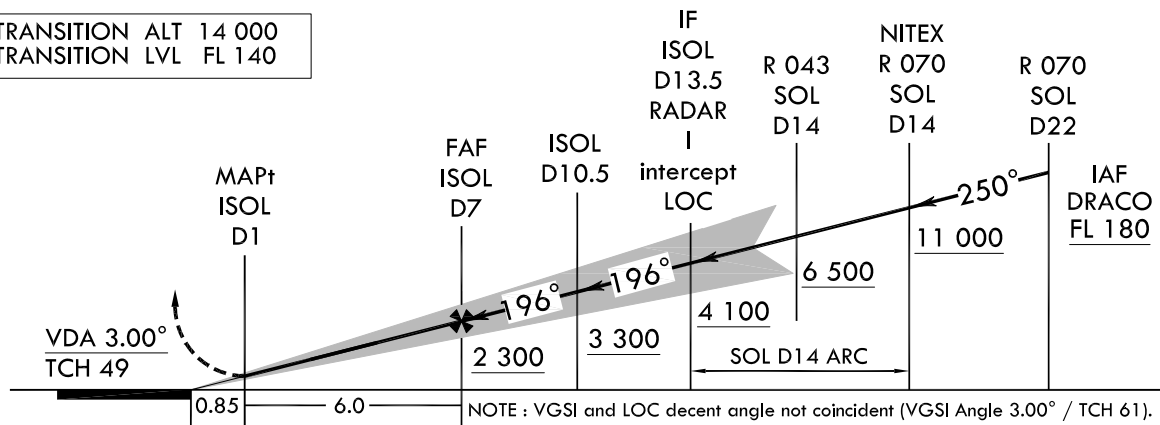
NOT TO SCALE



Missed Approach Climb Rate table

Knots	60	120	180	240	300	TO
V/V(fpm)	440	880	1 320	1 760	2 200	4 000

TRANSITION ALT 14 000
TRANSITION LVL FL 140



CATEGORY	A	B	C	D	E
S-LOC RWY 20	N/A			520/45 451 (500 - 7/8)	
Circling	N/A		1 560 - 3 1 467(1 500-3)	2 260 - 3 2 167(2 200-3)	

MISSED APPROACH

Climb HDG 196° to ISOL 3 DME and climbing left turn HDG 030° to cross R 090 SOL at 4 000 ft, then R 070 SOL to DRACO and hold, continue climb-in-holding to FL 180.

Change : Information of RK P73 and RK R75.

INTENTIONALLY

LEFT

BLANK

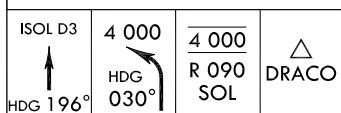
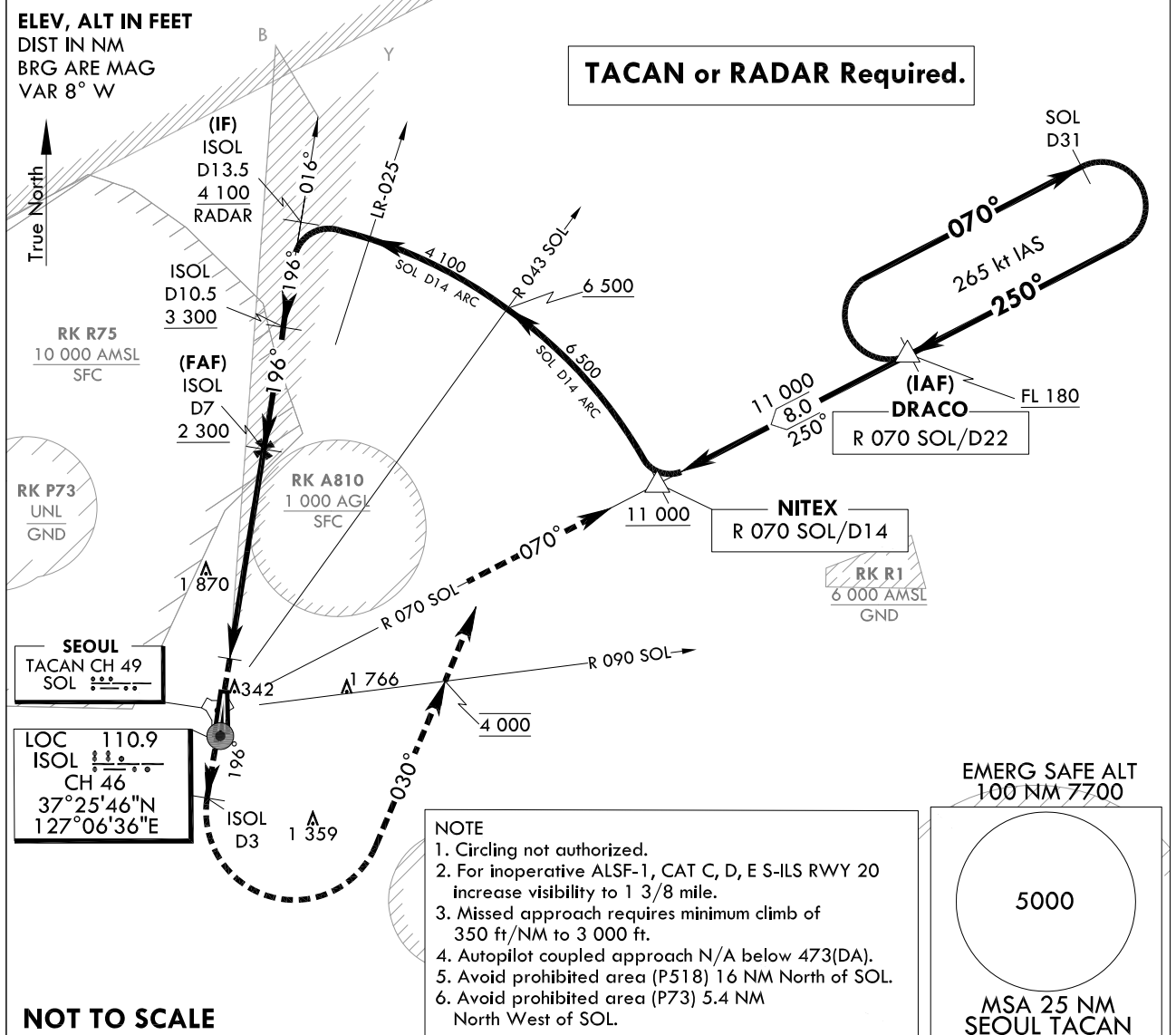
**INSTRUMENT
APPROACH
CHART**

AERODROME ELEV 93 ft
HEIGHTS RELATED TO
THR RWY 20 - ELEV 68 ft
HIGHEST ELEV TDZ 69 ft

SEOUL APP 123.8 363.8
SEOUL TWR 126.2
234.5 236.6

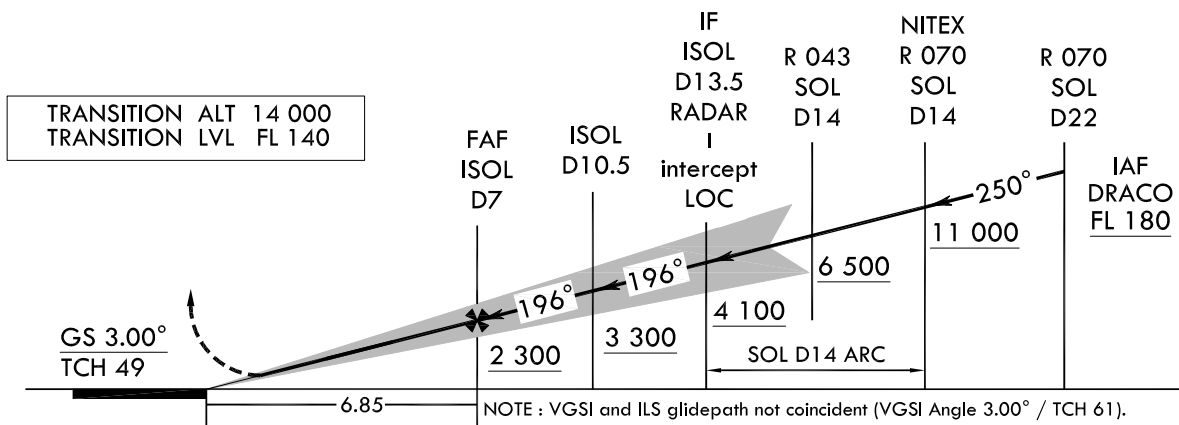
SEOUL/Seoul(RKSM)
HI-ILS
RWY 20

Note : Approach and Circle to land under U.S. TERPS.



Missed Approach Climb Rate table

Knots	60	120	180	240	300	TO
V/V(fpm)	350	700	1 050	1 400	1 750	3 000



CATEGORY	A	B	C	D	E
S-ILS RWY 20	N/A			473/45 404 (400 - 7/8)	

MISSSED APPROACH

Climb HDG 196° to ISOL 3 DME and climbing left turn HDG 030° to cross R 090 SOL at 4 000 ft, then R 070 SOL to DRACO and hold, continue climb-in-holding to FL 180.

Change : Information of RK P73 and RK R75.

INTENTIONALLY

LEFT

BLANK